

Volume 2(3): 299–346
Publication Date: 25 June 1982
dx.doi.org/10.7751/telopea19824303-m

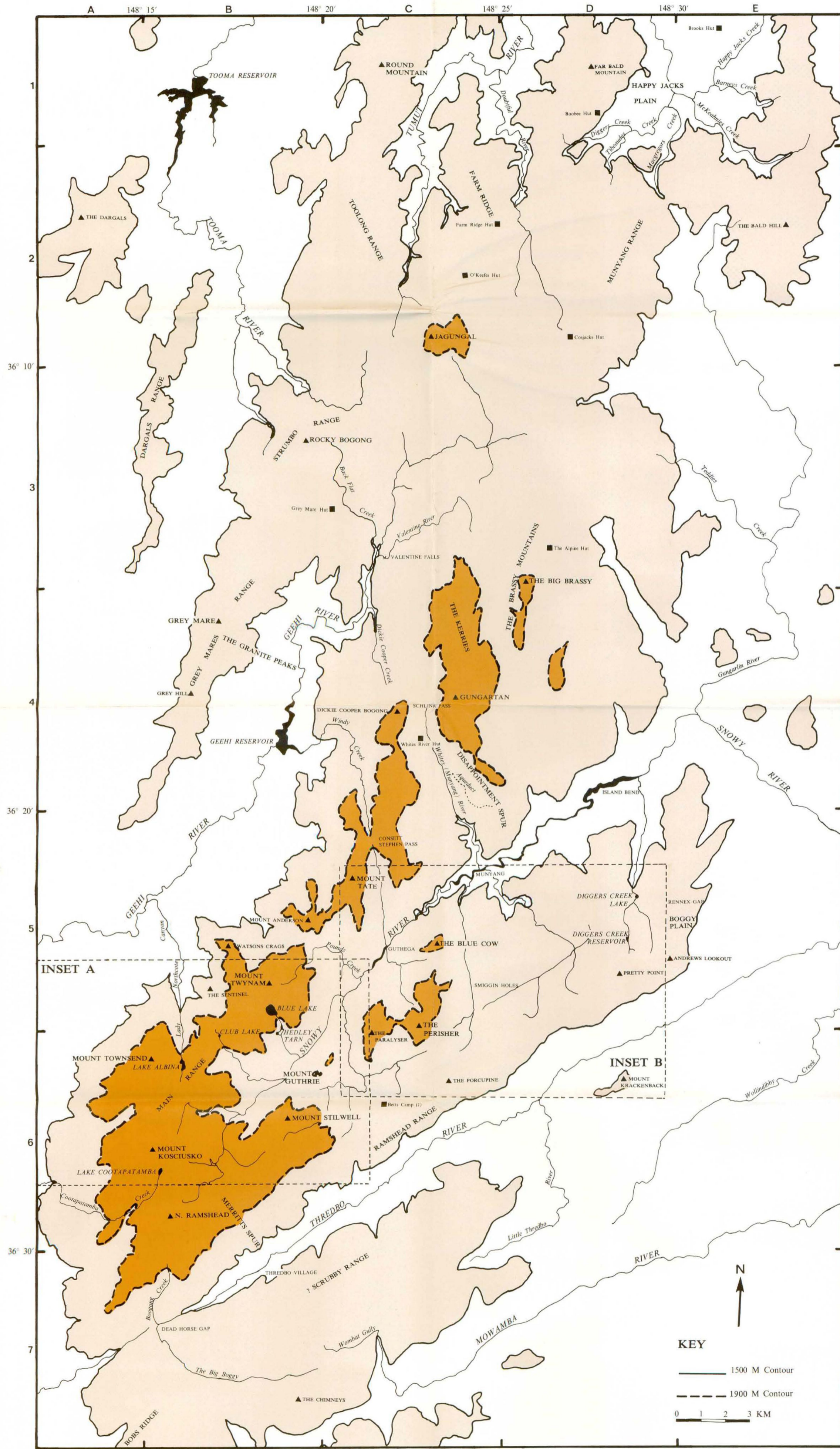
TELOPEA

Journal of Plant Systematics



plantnet.rbg Syd.nsw.gov.au/Telopea • escholarship.usyd.edu.au/journals/index.php/TEL • ISSN 0312-9764 (Print) • ISSN 2200-4025 (Online)

SKETCH MAP OF KOSCIUSKO REGION

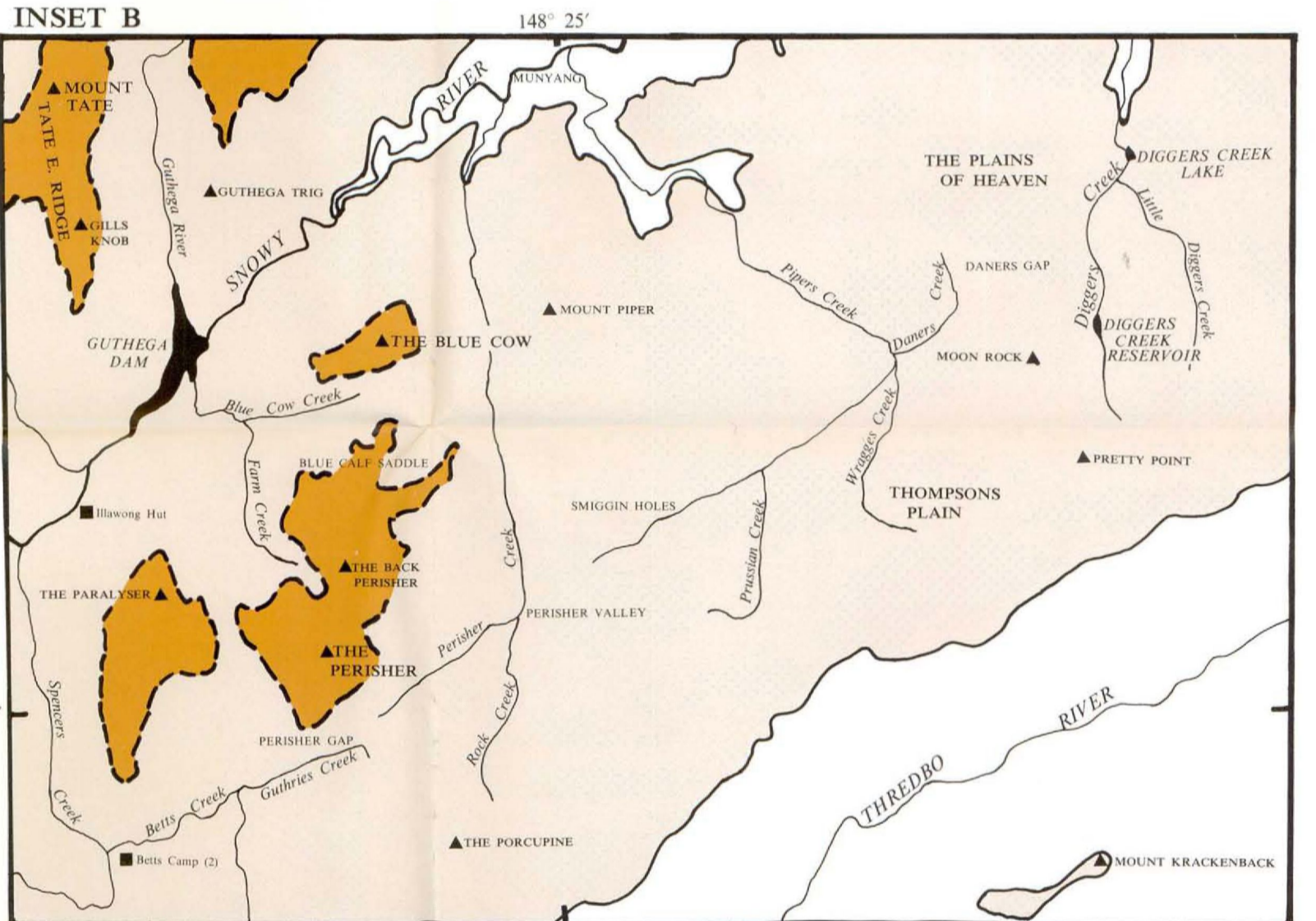


LOCALITY	MAP REFERENCE	LOCALITY	MAP REFERENCE	LOCALITY	MAP REFERENCE	LOCALITY	MAP REFERENCE
ABBOT PEAK	'A'	FAR BALD MOUNTAIN	D-1	MacGregors Creek	D-1	SMIGIN HOLES	C-5
ABBOT RANGE	'B'	FARM RIDGE	C-2	MAIN RANGE	B-6	SNOWY RIVER	B-5 to E-4
ANDREWS LOOKOUT	D-5	FARM RIDGE HUT	C-4	Merritts Creek	E-1	Soil Conservation Hut	'A'
Aqueduct	C-4			MERRITT'S SPUR	'A'	Spencers Creek	'A', 'B'
Back Flat Creek	C-3			MOIRAS FLAT	B-6	STRUMBO RANGE	B-3
Barneys Creek	E-1			MOON ROCK	'B'	TATE E. RIDGE	'B'
Betts Camp (1)	C-6	GEEHI RESERVOIR	B-4	MOUNT ALICE RAWSON	'A'	Teddies Creek	E-3
Betts Camp (2)	'B'	GILLS KNOB	A-5 to C-3	MOUNT ANDERSON	B-5	The Alpine Hut	D-3
Betts Creek	'B'	GREY HILL	B-4	MOUNT CLARKE	'A'	THE BACK PERISHER	'B'
BLUE CALF SADDLE	'B'	GREY MARE	C-3	MOUNT GUTHRIE	B-6	THE BALD HILL	E-2
Blue Cow Creek	'B'	GREY MARES RANGE	B-4	MOUNT KOSCIUSKO	B-6	The Big Boggy	B-7
BLUE LAKE	B-5	Gungahlin River	E-2 to E-4	MOUNT KRACKENBACK	D-3	THE BLUE COW	C-5
BOBS RIDGE	B-5	GUNGARTAN	C-4	MOUNT LEE	'A'	THE BRASSY MOUNTAINS	D-3, 4
BOGGY PLAIN	D, E-5	GUTHEGA	C-5	MOUNT NORTHCOTE	'A'	The Chalet	'A'
Boobie Hut	D-1	GUTHEGA DAM	'B'	MOUNT PIPER	B-6	THE CHIMNEYS	B-7
Boogong Creek	B-7	Guthega River	'B'	MOUNT TATE	C-5	THE DARGALS	A-2
Brooks Hut	E-1	GUTHEGA TRIG	'B'	MOUNT TOWNSEND	B-5	THE GRANITE PEAKS	B-4
		Guthrie Range	'B'	MOUNT TWYNAM	C-7 to E-6	THE KERRIES	C-5, 6
		Guthrie's Creek	'B'	MOWAMBA RIVER	C-5, 6	THE PARALYSER	C-5, 6
				MUELLERS PEAK	C-5	THE PERISHER	C-6
				MUNYANG RANGE	D-2	THE PLAINS OF HEAVEN	'B'
						THE PORCUPINE	C-6
						THE SENTINEL	B-5
						THOMPSONS PLAIN	'B'
						THREDBO RIVER	B-7 to E-5
						THREDBO VILLAGE	B-7
						Tibeauds Creek	D-1
						TOOLONG RANGE	C-2
						TOOMA RESERVOIR	B-1
						TOOMA RIVER	B-1, 2
						Traynard Creek	'A'
						TUMUT RIVER	C-1, 2
						VALENTINE FALLS	C-3
						Valentine River	C-3
						WATSONS CRAGS	B-5
						Whites (Munyang) River	C-4, 5
						Whites River Hut	C-4
						Wilkinson Valley Creek	C-1
						Windy Creek	C-4
						Wombat Gully	C-7
						Wragges Creek	'B'
						Wrights Creek	'A'

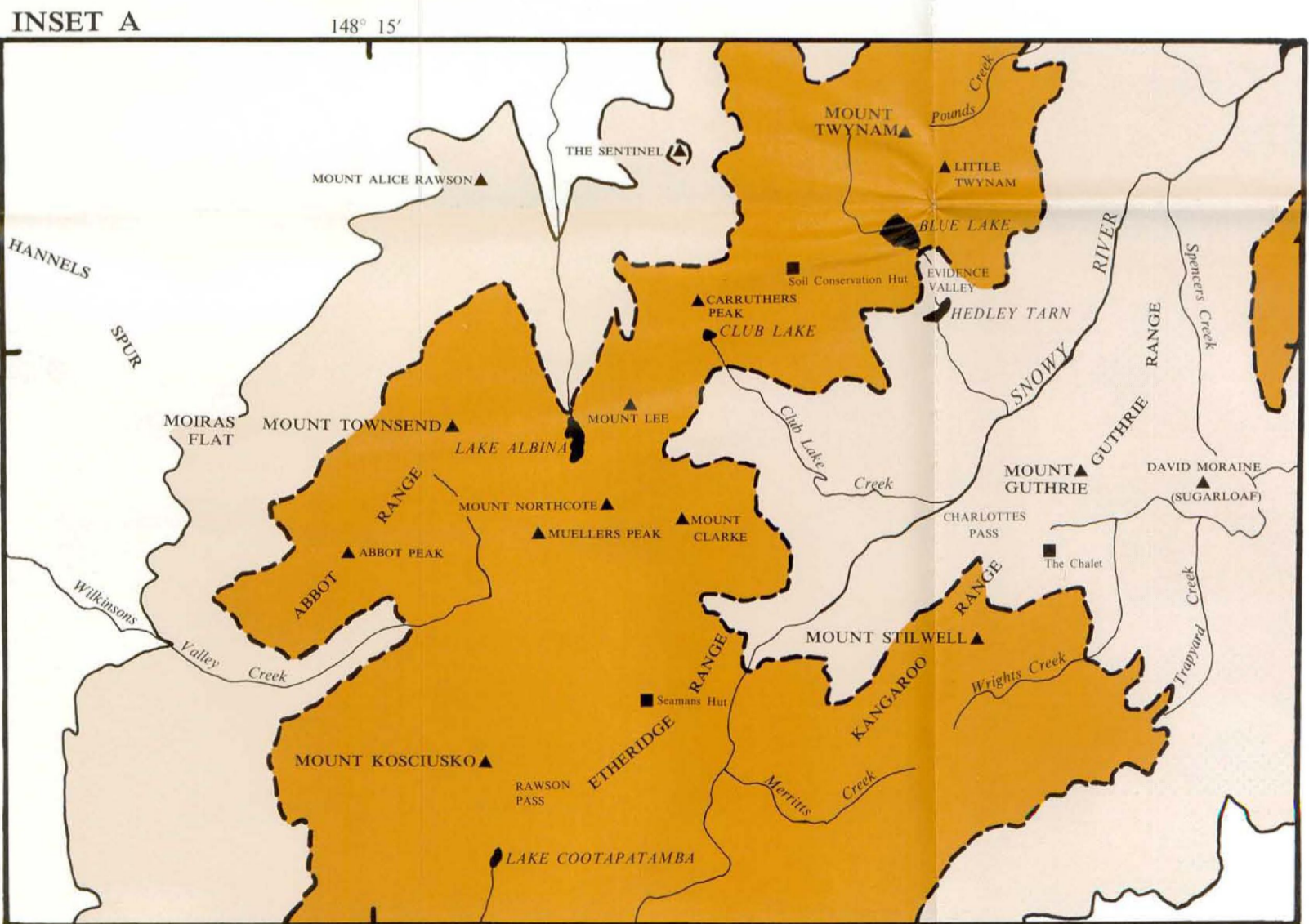
Localities shown as 'A' or 'B' appear only on Inset A or Inset B.



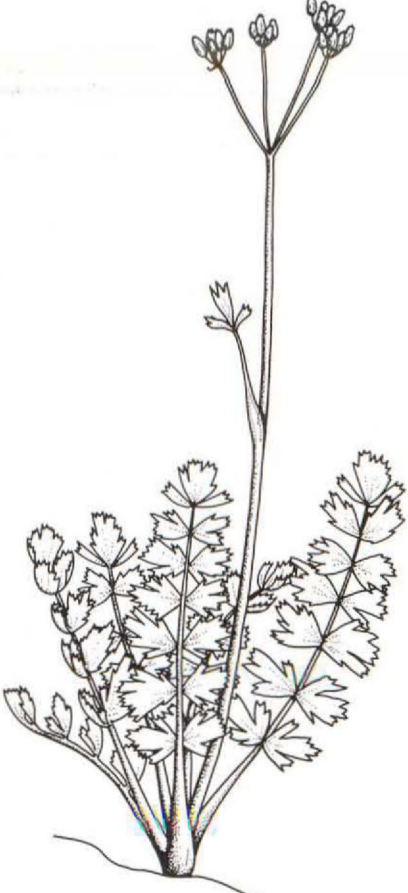
Craspedia leucantha



0 1 2 3 KM



0 1 2 3 KM



Gingidia algens