

## The pollination ecology of *Persoonia* (Proteaceae) in eastern Australia

Peter Bernhardt and Peter H. Weston

### Abstract

Bernhardt, Peter & Weston, Peter H. (Dept. of Biology, St. Louis University, St. Louis, Missouri, U.S.A. 63103; National Herbarium of New South Wales, Royal Botanic Gardens, Sydney, NSW, Australia 2000) 1996. The pollination ecology of *Persoonia* (Proteaceae) in eastern Australia. *Telopea* 6(4): 775–804. Twenty *Persoonia* spp. and two interspecific hybrids (*P. acerosa* × *P. levis*, *P. microphylla* × *P. mollis*) native to eastern Australia were examined. Although these radially symmetrical flowers appear to have a tubular perianth each tepal is hinged at its base and opens outwardly when depressed by an insect at least 6 mm long. These species show an aestival–autumnal flowering peak and four, differing, floral scents were recognised. *Persoonia pinifolia* and *P. subvelutina* produce nectar that is sucrose dominant. Twenty two insect taxa were collected on the flowers but field observations and the analyses of pollen loads carried by insects suggested that *Persoonia* is pollinated primarily by bees. Specifically, the most consistent pollen vectors were native *Leioproctus* species (Colletidae; subgenus *Cladocerapis*) and *Exoneura* species (Anthophoridae). Pollen load analyses showed that both *Exoneura* and *Leioproctus* spp. also foraged on the flowers of Myrtaceae and other co-blooming taxa. The deposition of *Persoonia* pollen on these bees was both dorsal and ventral as their contact with anthers was both active and passive. Female bees in subgenus *Cladocerapis* usually carried heavier loads of pollen than males, which appeared to forage for nectar exclusively.

*Leioproctus* (*Cladocerapis*) spp. observed on *P. glaucescens*, *P. lanceolata* and *P. mollis* showed stereotyped modes of pollen collection confirming observations first made by Rodd as cited by Rayment (1950). At two sites, 28% of the bees collected carried the pollen of more than one *Persoonia* species. The high frequency of first generation hybrids between *Persoonia* species is explained, in part, by a combination of overlapping distributions, flowering periods and pollinators.

### Introduction

Most of the literature on the pollination ecology of Australasian Proteaceae has been produced within the last twenty years. Consequently, when the monumental review of the family by Johnson and Briggs (1975) is re-read today, the section entitled 'Inflorescences and Pollination', seems rather speculative.

Johnson and Briggs' records of vertebrate pollinators came primarily from anecdotal references or from the colour photos of wildlife photographers. Papers referring to the foraging of Australian bees on the flowers of the Proteaceae were still scattered through the entomological literature and would not be compiled and cross-referenced until Armstrong (1979).

Today, the study of the floral biology of Australasian Proteaceae has become important to the science of pollination ecology for two reasons. First, many taxa are such dependable and copious producers of nectar that it is relatively easy to quantify the calorific content of individual flowers and/or whole inflorescences (Paton 1985). Since much of the nectar produced by these taxa is consumed by passerine birds and lorriid parrots, bird/flower interactions provide one of the most visible model systems to test theories of optimal foraging theory and resource allocation (Pyke & Waser 1981; Pyke 1982).

The movement of vertebrates through the habitat is relatively easier to see and track compared to most insects. No wonder recent, comparative studies of pollination

systems within the Proteaceae have favoured bird or mammal-pollinated taxa. For example, Collins and Rebelo (1987) add new information on functional morphology and floral behaviour of Proteaceae in Australia and southern Africa. However, they concentrate on vertebrate-pollinated genera and remark that information on entomophilous systems remains 'rudimentary'.

Second, Sussman and Raven (1978) offered a novel interpretation of the wiry protostigmas found in most genera in the Proteaceae. They suggested that there had been an early association between angiosperm flowers and small, wingless mammals. The tough, curved style served both as a pollen presenter and as a 'rung' for a climbing mammal. Arboreal rodents and marsupials in Australia do feed on the nectar and pollen of native Proteaceae (Turner 1982). However, their role as agents of cross-pollination remains controversial since Hopper and Burbidge (1982) accuse these mammals of consuming or grooming away pollen deposits in fur and whiskers before it is transferred to the stigma of a second genotype. There has been additional evidence that large bats (Megachiroptera) may also pollinate some *Banksia* spp. (Law 1994) as first predicted by Johnson and Briggs (1975). However, research directed exclusively towards vertebrate pollination of Australasian Proteaceae will always result in a biased and incomplete interpretation of floral evolution of this family.

If pollination by vertebrates is an ancestral feature of the Proteaceae why do so many rainforest relicts (e.g. *Placospermum*, *Eidothea*, *Carnarvonnia*, *Sphalmium*, *Neorites*, *Cardwellia*, *Buckinghamia*, *Opisthiolepis*, *Floydia*, *Musgravea*) lack the full suite of reproductive characters associated with vertebrate-pollination? In fact, pollination by birds or wingless mammals has been recorded far more frequently in the Proteaceae of sclerophyllous woodlands and shrublands (Hopper and Burbidge 1982, 1986; Paton 1986; Turner 1982; Collins and Rebelo 1987). Similarly, why do most basal lineages in the Proteaceae, such as the Persoonioideae, Bellendenoideae, Carnarvonioideae, Sphalmioideae, Eidotheoideae and the tribe Conospermeae (Proteoideae) lack the suite of characters associated with vertebrate pollination?

Based on patterns of character distribution in the Proteaceae, Johnson and Briggs (1975) inferred that the family was primitively entomophilous and restricted to closed, mesothermic forests. Evolutionary shifts to vertebrate pollination and to xeric habitats was inferred to be a secondary and often recurrent process. Primitive occurrence in rainforests has been supported, in part, by the fossil evidence (Truswell 1990).

The genus *Persoonia* would appear to be the most logical choice to help close the information gap on the role of insects in floral evolution within the Proteaceae. Comparatively few *Persoonia* species occur in rainforests; most are shrubs or small trees of sclerophyll woodlands and shrublands. Consequently, many *Persoonia* species form far denser and more readily accessible populations (see Weston 1991, 1994; Weston and Johnson 1991) than those rainforest relicts listed above.

Of greater importance, *Persoonia* belongs to the Persoonioideae, the only subfamily that completely lacks proteoid roots and thus is likely to be one of the most basal lineages in the family. The Persoonioideae also shows no evidence of protostigma development considered synapomorphic in at least three different lineages that include most of the genera in the family. *Persoonia* may then provide a model system for understanding evolutionary trends in the functional morphology of the flowers of Proteaceae.

Bees in the long-tongue families Anthophoridae (*Allodapula*, *Amegilla*, *Exoneura*), Apidae (*Apis*, *Trigona*) and Megachilidae (*Chalicodoma*, *Megachile*) have been reported to collect nectar and/or pollen on *Persoonia* species (Armstrong 1979). Pollination mechanisms in *Persoonia* were first addressed by two amateur entomologists in a little known paper (Rayment 1950). Rayment described three new species of short-tongue bees in the genus *Cladocerapis* (now *Leioproctus* subgenus *Cladocerapis*) including

correspondence from Norman Rodd concerning the unusual mode of pollen foraging by these bees on *Persoonia mollis*. Rodd deposited a voucher specimen (NSW 21325) from one of the shrubs visited by *Leioproctus* bees. It has since been identified as *P. mollis* subsp. *ledifolia* as cited by Krauss & Johnson (1991).

Rodd described how these members of the Colletidae landed on the recurved tepals, and then pushed both their front legs down the longitudinal slit on each side of an anther, scooping out pollen. The pollen retained in the claws of each front leg was then transferred to the collection hairs on the back legs. Rayment (1950) also included a detailed, pen and ink illustration showing how the smooth clypeus of the bee slides down against the central style while the bee inserts its tongue between the tepal and the ovary stalk to probe for nectar secreted by four receptacular glands. Rodd excavated the bees' burrows for Rayment and noted that the pollen loaves or 'puddings' made by *Cladocerapis* bees smelled strongly of *Persoonia* flowers.

Unfortunately, many of Rayment's publications have since been discredited by contemporary entomologists, so his field observations and microscopy must be repeated and rechecked. However, while other entomologists have studied bees that forage on *Persoonia* species (Maynard 1992, 1994, 1995), they have never determined which bee species are true pollinators, nectar thieves or pollen scavengers. In fact, Rayment (1950) provides the only written record and illustration of *Persoonia* pollen removed from the body of a few bees belonging to the same genus.

Maynard (1992, 1994) suggested that two subgenera in *Leioproctus* (*Cladocerapis* and *Filiglossa*), are oligolectic (sensu Michener 1979) on *Persoonia*. However, Maynard (1992) also reported that some *Leioproctus* spp. in subgenus *Cladocerapis* were also captured on flowers of *Leptospermum* sp., *Lomatia silaifolia* and *Claoxylon australis*. This suggests that not all species in subgenus *Cladocerapis* forage exclusively on *Persoonia*.

Establishing which animals are responsible for the majority of successful pollinations in *Persoonia* is important for two reasons. Firstly, artificial pollinations and allozyme electrophoresis by Krauss (1994a, 1994b) have shown that the *Persoonia mollis* complex is dominated by outcrossing genotypes. Self-pollination rarely results in successful seedset. Small sample sizes suggest that the successful pollination of one genotype by a second was usually no greater than the distance between immediate neighbours (Krauss 1994a, 1994b). Therefore, it is possible that pollen dispersal within the *P. mollis* complex is clumped or leptokurtic (sensu Richards 1986).

Second, in eastern Australia *Persoonia* species show an unusually high level of F1 hybrids (Weston 1991; Table 1). Therefore, fieldwork on the pollination ecology of sympatric species also helps assess degrees of weakness in different, prezygotic barriers to interspecific isolation.

## Materials and methods

### Study sites

Wild populations of 20 species of *Persoonia* (Table 2) and two hybrid plants were studied at 17 different sites. Detailed descriptions of those localities are listed in the appendix.

### Recording data on reproductive features

To record the floral phenology of each taxon in this study, the month of collection of each flowering specimen held at NSW was recorded. Multiple collections of the same taxon made by the same collector on the same day were recorded as a single datum. The resulting data were tabulated as the frequency of flowering records for each month for each taxon.





**Table 2. Flowering phenology of *Persoonia* species from which bees were collected for this study; each entry is the number of flowering specimens collected during a calendar month, held by NSW; sets of multiple collections made at the same site on the same day were each treated as a single record.**

	Oct	Nov	Dec	Jan	Feb	Mar	Apr	May	Jun	Jul	Aug	Sep
<i>acerosa</i>	–	–	1	9	6	5	5	2	–	–	–	–
<i>arborea</i>	–	–	–	–	2	–	–	–	–	–	–	–
<i>asperula</i>	–	–	–	6	–	2	–	–	1	–	–	–
<i>chamaepeuce</i>	1	–	6	25	15	4	–	1	–	–	1	–
<i>chamaepitys</i>	–	6	11	2	–	–	–	–	–	–	–	–
<i>glaucescens</i>	–	–	–	2	4	1	–	1	–	–	–	–
<i>isophylla</i>	–	–	1	1	2	3	3	–	1	–	–	–
<i>lanceolata</i>	2	–	2	4	8	7	6	5	3	–	2	–
<i>laurina</i> subsp. <i>laurina</i>	1	5	9	3	1	1	–	–	–	–	–	–
<i>levis</i>	2	5	8	2	3	3	1	2	–	–	–	2
<i>microphylla</i>	–	–	4	1	1	1	–	–	–	–	–	–
<i>mollis</i>	2	1	8	18	21	21	12	9	4	5	4	3
<i>myrtilloides</i> subsp. <i>myrtilloides</i>	–	–	10	9	4	2	1	1	–	–	–	–
<i>nutans</i>	–	1	7	4	–	1	1	–	2	3	–	1
<i>oblongata</i>	–	–	–	2	4	3	2	1	1	–	–	–
<i>oxycoccoides</i>	–	–	3	5	1	1	1	–	1	–	–	–
<i>pinifolia</i>	–	–	3	8	6	3	1	1	2	2	–	–
<i>silvatica</i>	1	1	4	11	1	–	–	–	–	–	–	–
<i>subvelutina</i>	–	–	–	3	7	1	–	–	–	–	–	–
<i>virgata</i>	1	1	3	11	3	3	1	4	1	–	1	–

For each taxon in this study, one tepal (plus its attached stamen) was removed from most, or all, of the flowering specimens held at NSW. Care was taken not to sample from multiple duplicates of a single collection. The tepal/stamens were rehydrated by soaking in distilled water overnight, which effectively restored their fresh, three-dimensional form. For each tepal/stamen, the length of the floral tube was measured under 10x magnification, using an eyepiece micrometer fitted to a stereo dissecting microscope. The length of the floral tube was defined as the linear distance between the base of the staminal filament (where it is adnate to its tepal) and the point at which the stamen becomes free from its tepal (at, or slightly above or below, the base of the anther). In most species, this is the point at which the tepal starts to recurve, thus losing coherence with the adjacent tepals. Measurements were scored by taxon and summary statistics (sample size, mean, range, standard deviation) calculated.

Sampling floral odour follows Bernhardt (1995) and Buchmann et al. (1978). Fresh flowers were placed in clean, glass vials and sealed for 15 minutes, 30 minutes, 45 minutes, one hour and two hours. The vials were placed in a warm, sunny location, then reopened and smelled. To determine possible sites of scent glands (osmophoric activity) whole flowers of seven species were submerged in a 1% solution of Neutral Red for two to 24 hours, then washed in distilled water for two hours. Living flowers of *P. cornifolia* (living collections number 973375) and *P. katerae* (living collections number 877128) used for scent tests came from shrubs grown at the Mount Annan Botanic Garden and the Royal Botanic Gardens, Sydney, respectively.

Nectar samples were collected by bagging individual flowers or whole inflorescences in situ overnight. The following morning each flower was probed with a ten lambda microcapillary tube. Since no flower produced as much as 10 microlitres of nectar, samples represent combined measurements from several flowers on the same shrub or several shrubs of the same species. Once ten microlitres was obtained the contents of the tube was deposited on Whatman's Filter Paper No.1. The contents were air dried, labelled and stored in a paper envelope and mailed to C.E. Freeman (Dept. of Biological Sciences, University of Texas, El Paso) to identify component sugars and record their relative proportions.

### Analyses of foraging insects

Observation of prospective pollinators and analyses of the pollen they carried followed Bernhardt (1984, 1995). The behaviour of insects on *Persoonia* flowers was recorded from 9 am until 4:30 pm. Insects were collected only if they were observed probing for nectar or actively collecting pollen. Insects were killed in jars containing fumes of ethyl acetate. Insects caught on different *Persoonia* species were always killed in separate jars. Jars were cleaned after each collecting trip to avoid contamination upon reuse. To analyse pollen carried by insects, each insect was placed on a clean glass slide and 'bathed' in a couple of drops of 100% ethanol. When the ethanol evaporated, the residue remaining on the slide was mounted in two or three drops of Calberla's fluid (Ogden et al. 1974). Identification of pollen was made under light microscopy. However, since more than one insect was killed in the same jar, some pollen contamination of insect bodies was possible. Therefore, a pollen taxon was not recorded as present on an insect unless more than 25 individual monads or 25 individual polyads (e.g. of Epacridaceae) could be counted under each cover slip (see Bernhardt 1984, 1995).

Light microscopy showed that, as under SEM (Feuer 1986), pollen grains of different *Persoonia* species may be identified using a combination of characters including the physical size of the grain, the length and angle of pollen lobes, the inflation of pore opercula, density of tectum scabs and the frequency of tetraporate grains and/or irregular lobes. While these characters intergrade broadly between many species it is possible to discriminate between the pollen of up to three, co-blooming, sympatric *Persoonia* species carried on the same insect and washed onto the same slide.

The length of each insect specimen was measured from its labrum to the apex of its abdomen. The insect was pinned, labelled to cross-reference with its pollen slide and sent to Dr K. Walker (National Museum of Victoria, Abbotsford) for identification.

## Results

### Floral phenology

Herbarium records indicated that there are likely to be some populations within the genus *Persoonia* in bloom each month of the year within New South Wales. However, flowering is greatest from December through April (Table 2). Interspecific overlap of flowering periods was found for each *Persoonia* species.

The flowering of a few species, such as *P. laurina* and *P. chamaepitys* was found to peak between late spring and early summer. Collections were few but the flowering of montane and subalpine *P. subvelutina* and *P. arborea* appeared confined to late summer. Flowering on a stem is acropetal to subacropetal in all species studied.

### Floral presentation

Upon expansion of the perianth, the flowers of most *Persoonia* species are held suberect (45 degrees) to horizontal in relation to the axis of the branch supporting the inflorescence. The flowers of *P. microphylla*, *P. myrtilloides*, *P. nutans* and *P. oblongata* nod on dangling pedicels less than 180 degrees to the axis.

The presentation of the tepals varies within the genus *Persoonia*. Some species produce a zygomorphic perianth but most are actinomorphic (Weston 1994). All eastern Australian species in this study have actinomorphic perianths with tepals forming a radially symmetrical tube or vase around the stalked ovary. The base of each tepal is a short, thin, flexible hinge (Fig. 1). In most species the tepals constrict to clasp the gynoecium. Since the anthers are fused to the tepals they form a secondary tube around the protruding style (Fig. 1). Therefore, less than a third of the style is usually visible in whole living flowers, as it is covered by the tepals and occluded further by the angled lower halves of the anthers (Fig. 1). In *P. arborea* and *P. chamaepitys* the tepals are not constricted so both the entire style and top of the ovary are visible to the viewer over the floral lifespan (Table 3).

Tepal length varies between species, producing tubes of different lengths and shapes (Fig. 2; Table 3). In *P. arborea*, for example, the tube is long, may curve and tends to constrict at its base, becoming trumpet-like or funnel-shaped (Fig. 2). In contrast, the tube of *P. pinifolia* expands at its base forming a bulbous pouch (Fig. 1). In *P. levis* the tube is so reduced it grades abruptly into a pot or pouch (Fig. 2). *Persoonia arborea*, *P. chamaepitys*, *P. silvatica* and *P. subvelutina* were the only species sampled that produce floral tubes greater than 4 mm long (Table 3). There was no correlation between tube length, topography or altitude.

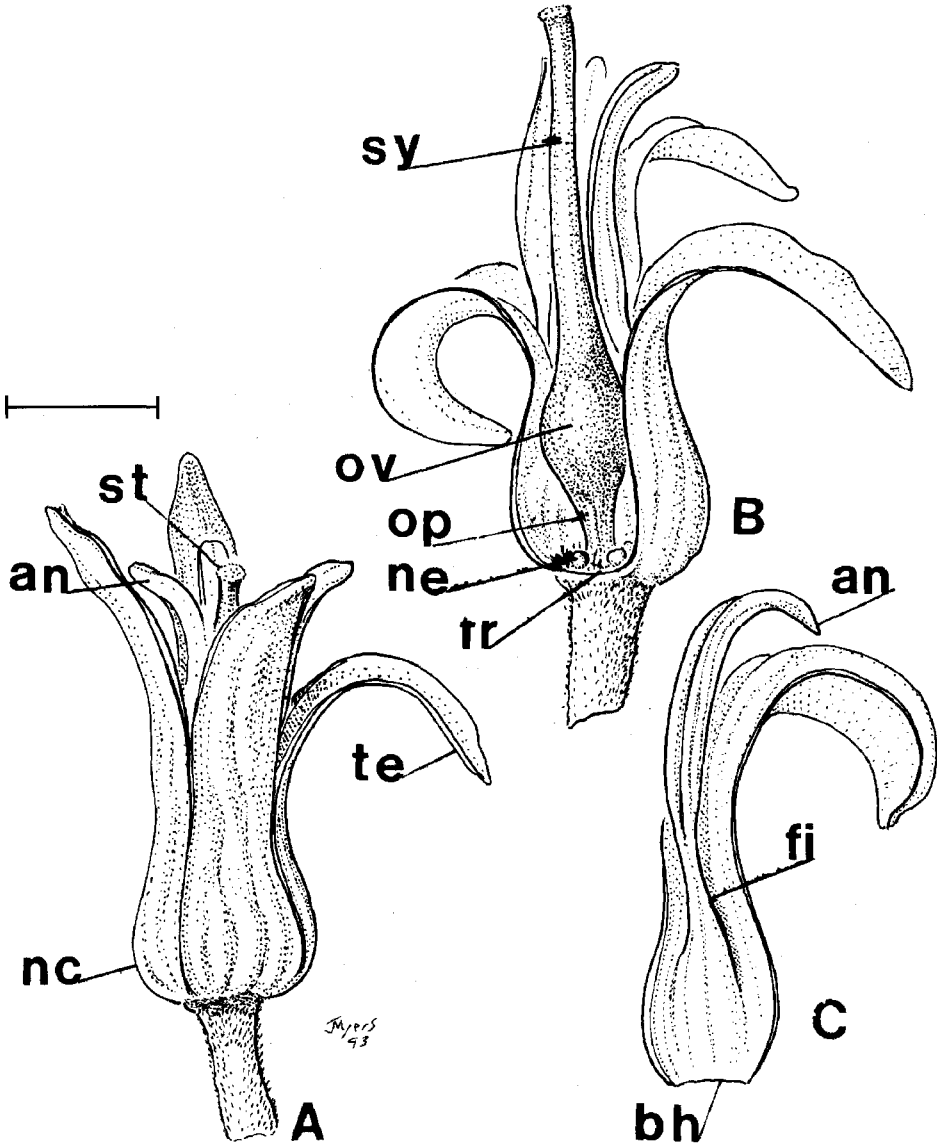
**Table 3. Floral tube length (mm) for each species of *Persoonia* from which bees were collected for this study, compiled from herbarium specimens held at NSW.**

Taxon	n	mean	range	S.D.	ovary exposed?
<i>acerosa</i>	22	3.53	2.5–4.4	0.50	no
<i>arborea</i>	4	9.33	8.0–10.3	0.84	yes
<i>asperula</i>	7	2.67	2.1–3.1	0.31	no
<i>chamaepeuce</i>	42	3.00	2.2–4.3	0.50	no
<i>chamaepitys</i>	17	7.15	4.0–12.5	2.85	yes
<i>glaucescens</i>	10	4.09	3.4–4.9	0.55	no
<i>isophylla</i>	11	2.46	2.1–2.9	0.22	no
<i>lanceolata</i>	38	3.58	2.6–4.5	0.49	no
<i>laurina</i> subsp. <i>laurina</i>	19	4.96	3.9–6.3	0.69	no
<i>levis</i>	24	4.12	3.0–5.3	0.53	no
<i>microphylla</i>	5	2.56	2.2–3.3	0.40	no
<i>mollis</i>	93	3.31	2.4–4.5	0.44	no
<i>myrtilloides</i> subsp. <i>myrtilloides</i>	16	3.34	2.7–3.8	0.36	no
<i>nutans</i>	17	2.82	2.3–3.6	0.38	no
<i>oblongata</i>	12	3.65	3.3–4.0	0.30	no
<i>oxycoccoides</i>	10	2.37	1.9–2.7	0.29	no
<i>pinifolia</i>	23	3.47	2.9–4.2	0.35	no
<i>silvatica</i>	20	4.16	2.6–5.0	0.67	no
<i>subvelutina</i>	8	5.34	4.1–6.3	0.70	no
<i>virgata</i>	23	2.57	1.9–3.7	0.38	no



**Floral attractants**

The tepals of all species observed are yellowish (old ivory) to yellowish orange in colour to the human eye. Dull amber or rusty tones are due to the darker-coloured, simple trichomes on the tepals. *Persoonia arborea*, *P. laurina*, *P. subvelutina* and *P. silvatica* have glossy, white anthers. In all other taxa examined the anthers are yellowish to the human eye often turning a dried mustard colour with age. The tepals of *P. glaucescens* were observed to change from a deep apricot to a light, straw yellow as the individual flowers age. The yellow tepals of *P. lanceolata* become progressively paler with age.



**Fig. 1.** Flower of *Persoonia pinifolia*. A, whole flower with anther bases clasping the style; B, tepal removed showing the interior of the nectar chamber; C, coalescence of tepal and stamen (scale = 2 mm). an = anther; bh = basal hinge; fi = filament; fr = floral receptacle; nc = nectar chamber; ne = nectary; op = gynophore; ov = ovary; st = stigma; sy = style.

The Neutral Red Test indicated that the flowers of seven species stain positively for the presence of osmophoric activity (Table 4). The floral sites showing the most consistent pattern of staining for all seven species were the stigmas, nectar glands and anthers. In *P. levis* and *P. oxycoccoides* the wrinkled margins of the tepal lobes also stained deeply. In four species the trichomes on the outsides of the tepals showed a strong response to the stain (Table 4). The staining of floral organs with Neutral Red varied between *P. mollis* subspecies.

Flowers sampled on their branches and flowers kept in sealed vials showed four, overlapping scent types. A vanilla-musky scent was produced by *P. silvatica* and *P. subvelutina*. This is such a strong odour that it is still recognisable several metres away from the flowering shrub. The intensity of the odour does not become noticeably

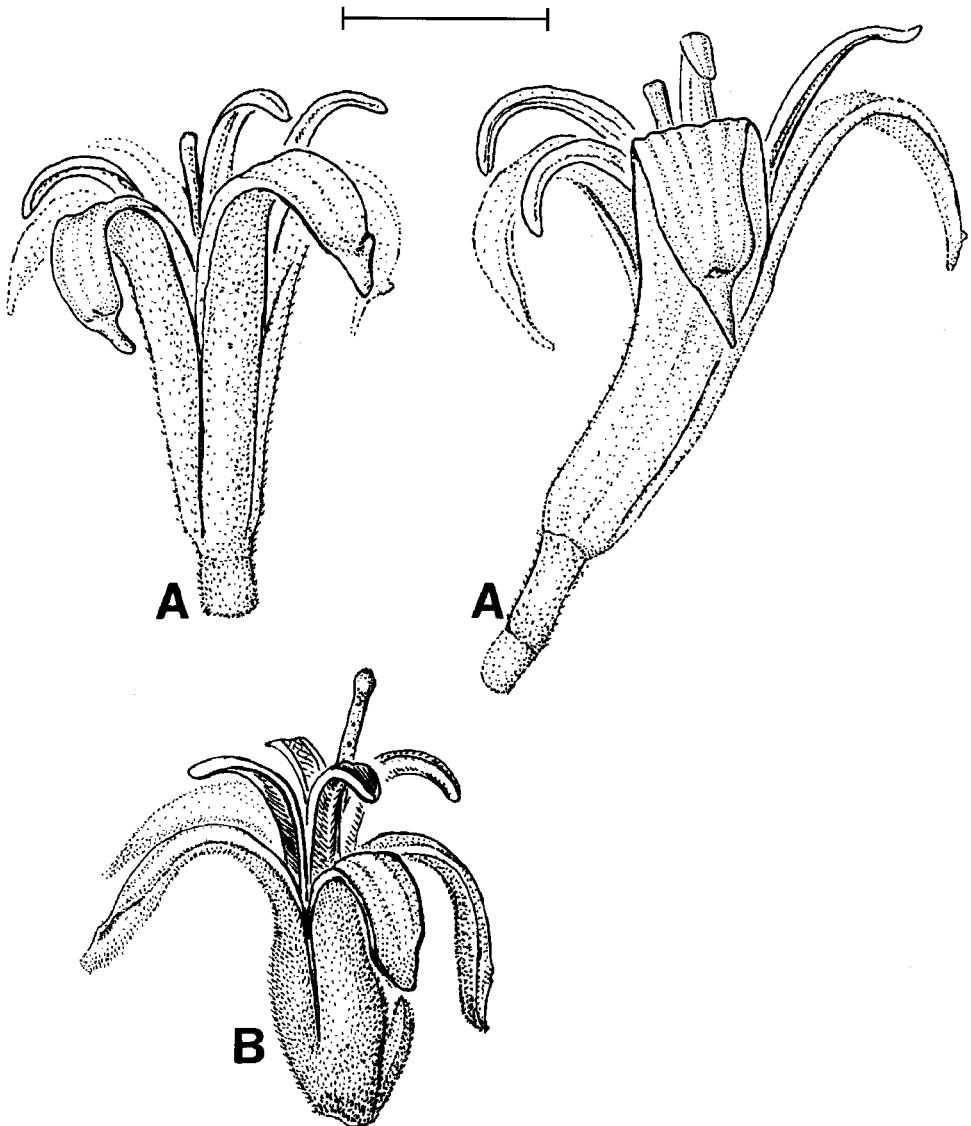


Fig. 2. Variation in the length and shape of the perianth tube. A, *persoonia arborea*; B, *persoonia levis* (scale = 5 mm).

stronger or different upon bottling for less than 30 minutes. The scent is reminiscent of vanilla extract with undertones of commercial musk colognes. The floral odour of these two species is surprisingly similar to many of the neotropical, day-flowering orchids in the genus *Encyclia* (e.g. *E. cordigera*).

The floral-yeasty scent of *P. mollis* and *P. pinifolia* is far weaker to the human nose when sampled in situ, producing a faint but pleasantly honey-like perfume reminiscent of *Boronia*, *Plumeria* or *Narcissus* flowers. Once bottled, these sweet floral odours become more pronounced within 30 minutes, but a yeast-like undertone can also be discerned. *Persoonia glaucescens* and *P. isophylla* also produce these weak scents but after bottling they seem closer to the vanilla-musk scent described above.

The fruity scent of *P. lanceolata* and *P. oxycoccoides* is also weak to the human nose when sampled in situ. Upon bottling the concentrated odour is similar to ripe, commercial bananas or cherries.

The 'green' smell of *P. katerae* and *P. cornifolia* is not discernible in situ and only becomes apparent 20–30 minutes after bottling. At that time the concentrated odour is reminiscent of freshly chopped, green beans or unripe tomatoes.

If flowers of all the above species are bottled for 60 minutes or more, their original odour degrades into the green smell.

### Nectar

Field examinations and lab dissections showed that nectar droplets are secreted by each of the four receptacular nectaries surrounding the gynoecium and flanking each of the four tepals (Fig. 1). Nectar droplets cling to the large nectaries or adhere to the smooth bases of the inner surfaces of the tepals when secretions are particularly copious. Nectar is usually retained in a restricted chamber formed by the base of the perianth, floral receptacle and ovary stalk. Access to the chamber is blocked by the ovary, which forms a roof, and by the degree of constriction of the tepals and anther bases (Fig. 1). Flowering branches bagged overnight contained nectar the following morning. Less than one microlitre of nectar could be removed from each individual flower of any species at any time, with the exception of *P. silvatica* and *P. subvelutina*. Bagged overnight, individual flowers of these two species produced a maximum of five microlitres of nectar. The sugar analyses of the nectar of *P. subvelutina* was 93.1% sucrose, 3.8% glucose and 3.1% fructose. *P. pinifolia* was 97.9% sucrose, 1.2% glucose and 0.9% fructose.

**Table 4. Scent descriptions of *Persoonia* spp. and results of Neutral Red tests.**

TAXON	scent type	stig	nect	ant	tep	tepm	trc
<i>cornifolia</i>	green smell	++	++	++	+	+	++
<i>isophylla</i>	sweet-yeasty	+	++	++	+	+	+-
<i>katerae</i>	green smell	+	++	+	+-	+-	+
<i>levis</i>	green smell	++	++	++	+	++	++
<i>mollis</i> subsp. <i>ledifolia</i>	sweet-yeasty	++	++	++	-	+	++
<i>mollis</i> subsp. <i>nectens</i>	sweet-yeasty	+	++	++	+-	+-	+
<i>oxycoccoides</i>	fruity	++	++	++	+	++	NA
<i>pinifolia</i>	sweet-yeasty	++	++	+	+-	+-	++

\* stig = stigma; nect = nectary; ant = anther; tep = glabrous inner surface of the tepal; tepm = tepal margins; trc = trichomes on the outer surface of the tepal and along the tepal margins; NA = not applicable — the flowers of this species are glabrous.

### Forager diversity, density and gender

A collection of 531 foraging insects was made on the flowers of 19 *Persoonia* species and the hybrid *P. acerosa* × *P. levis*. The collection contained one beetle genus, four wasp taxa and 11 bee genera representing five families (Table 5). Of the five families of bees the Colletidae and Halictidae are classified as short-tongue bees, due to the reduced length of the glossa (Michener 1979). Bees were the dominant foragers, comprising almost 99% of the collection. All bee taxa collected, excluding *Apis mellifera*, were Australian native taxa.

Bees in the genus *Leioproctus* (subgenus *Cladocerapis*; Colletidae) were collected on 17 of the 20 *Persoonia* species and on the hybrid *P. acerosa* × *P. levis* (Table 5). These bees made up over 47% of the total catch. Male and female bees in this subgenus were collected while they probed *Persoonia* flowers for nectar. Five of the nine species described in this subgenus in eastern Australia (Maynard 1992) were identified. The most commonly collected species in subgenus *Cladocerapis* was *L. speculiferus* which was collected on 12 *Persoonia* species. *Leioproctus bipectinatus* was collected least often and was confined to the Nerriga site (Table 5 and Appendix).

All bees collected on *Persoonia* flowers, with the exception of *Leioproctus* and *Nomia* species, were females. Specimens of *Apis mellifera* and *Trigona* belonged to the worker caste. Collections of males of *Nomia* and *Leioproctus* species on *Persoonia* flowers never exceeded collections of females although the ratio of male to female *L. raymenti* was 0.50 (and see Table 7).

Similarities between the diversity and density of floral foragers on different *Persoonia* species were greatest when *Persoonia* species shared the same site and an overlapping floral phenology. For example, foragers were sampled three times at the Hilltop site. *Leioproctus carinatifrons*, *L. incanescens* and *L. speculiferus* were the dominant native foragers on each of three *Persoonia* species (Tables 5 and 7). Bees in subgenus *Cladocerapis* comprised 91% of the total catch at the Hilltop site.

Floral foragers collected on *P. mollis* and *P. microphylla* at the Nerriga site represent only a single sampling. In both species, though, *Leioproctus incanescens* was the dominant forager. Nerriga was the only site at which the uncommon *L. bipectinatus* was collected and it was found on both *Persoonia* species (Table 5 and see above).

*Persoonia pinifolia* and *P. isophylla* are treated as sister species (Weston & Johnson 1991) but these two taxa were sampled at three, separate sites where only one species was present. Flowers of the *P. pinifolia* population were sampled for floral foragers five times over two seasons. The *P. isophylla* sites were each sampled three times in one season. The majority of native bees foraging on *P. pinifolia* belonged to long tongue families Anthophoridae, Megachilidae and Apidae. Only 7% of the Hymenoptera collected on *P. pinifolia* were colletids in *Leioproctus* subgenus *Cladocerapis* (*L. sp.*, *L. incanescens*, *L. raymenti* and *L. speculiferus*) (Table 5).

In contrast, *Leioproctus (Cladocerapis) speculiferus* was the dominant forager on *P. isophylla*, comprising over 40% of the total catch. With the exception of the naturalised *Apis mellifera* (Apidae), long-tongue foragers were not captured on the flowers of *P. isophylla*. Instead, the short-tongue *Nomia* species (Halictidae) were more common (Table 5).

### Pollen load analyses

The *Zonitis* beetle and most of the wasps collected on *Persoonia* flowers did not carry *Persoonia* pollen (Table 5). *Hylaeus* bees foraged for pollen on *Persoonia* anthers by swallowing grains so deposition of *Persoonia* pollen on the bee's body was usually negligible. *Apis mellifera* and *Trigona carbonaria* were the only insects observed to mould *Persoonia* pollen into smooth, nectar-dampened pellets to be carried on the

corbiculae of the hind legs. All other female bees that carried significant loads of *Persoonia* pollen were observed to transfer pollen to scopal hairs on the hind legs and/or ventral hairs at the base of the abdomen (Fig. 3).

Male *Leioproctus* species (*Cladocerapis* and *Filiglossa*) also carried loads of *Persoonia* pollen on their bodies (Table 7). Pollen was deposited randomly on the head and thorax since males lack scopae and were never observed foraging actively on the anthers (see below). With the exception of males of *Leioproctus raymenti*, females of four *Leioproctus* species carried proportionately heavier loads of *Persoonia* pollen.

Almost 80% of all insects captured on the flowers of *Persoonia* species carried significant loads of *Persoonia* pollen. The number of insects carrying pure loads of *Persoonia* pollen was 55% higher than the number of insects caught carrying *Persoonia* pollen mixed with the pollen of one, or more, co-blooming taxa (Table 5). Analyses of 142 bees carrying mixed loads showed that seven pollen types, other than *Persoonia*, could be recognised (Fig. 4, 5; Table 9). *Acacia* polyads were the only taxa that could be recognised as coming from flowers lacking functional floral nectaries (Bernhardt 1989). Of these seven recognisable types the pollen of Myrtaceae was most often found on bees carrying mixed loads (Table 9). Mixed loads of pollen were common on female *Leioproctus* (*Cladocerapis*) species although this subgenus has been regarded as oligolectic (Maynard 1992 and 1994).

Of the 424 bees found to carry *Persoonia* pollen, 4.7% were detected carrying the pollen of more than one *Persoonia* species in the same pollen load. Specifically, each bee recorded as carrying more than one *Persoonia* species carried more than 25 grains of each *Persoonia* species. At the two sites in which interspecific foraging by bees was recorded, 28% of the bees examined carried the pollen of more than one *Persoonia* species (Table 8).

### Foraging behaviour and contact with the stigma

The mode of nectar collection by different bee taxa correlated with body lengths. Both bees and wasps with bodies greater than 6 mm long first landed on the anthers or tepal apices. The insect then depressed one or two tepals and inserted its head and thorax down the floral tube to probe within the nectar chamber (Table 6).

Depression of the tepals could occur in two ways. In most cases the bee or wasp depressed the tepal while its head faced the style. In fewer cases we observed that the insect would cling to the style or anthers with its legs and then push its head up under the tepal so its eyes faced the tepal and not the style. This second mode of entering the floral tube was observed most often when bees foraged on *Persoonia* species with nodding flowers.

Bees less than 6 mm long did not or could not depress the tepals (Table 6). *Homalictus* species, *Hylaeus* species and *Trigona carbonaria* were observed to collect pollen after grasping individual anthers. They were not observed to either enter the floral tube or attempt to rob nectar by puncturing the base of the nectar chamber. These bees were so small that they did not usually contact the *Persoonia* stigma while foraging for pollen.

*Leioproctus* species in subgenus *Filiglossa* have much elongated maxillary and labial palps with long, stiff, segmented hairs ornamenting the apices of the maxillary galeae (Fig. 6; Maynard 1994). Females were observed to forage actively on anthers for pollen, retaining grains in their scopal hairs. Females were also observed inserting their filiform mouthparts between tepals at the apex of the 'closed' floral tube (cf. Maynard 1995). Females were not observed to contact the stigmas regularly while 'fishing for nectar' in this manner as the bee's body was usually shorter than the protruding tip of the anthers. Males observed foraging on *P. silvatica* inserted their

Table 5. Pollen load analyses of insect foragers collected on *Persoonia* species.

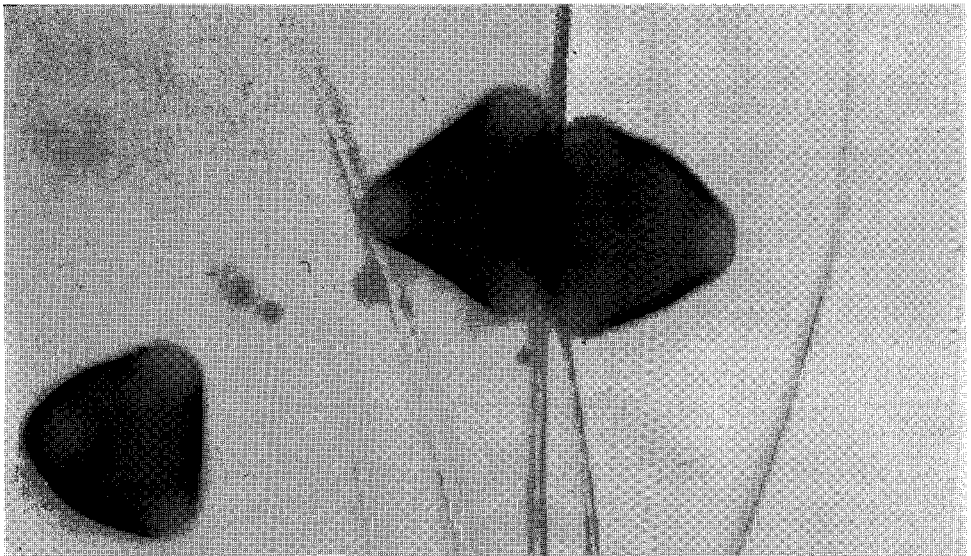
Plant and insect taxon	number of insects carrying pollen of this <i>Persoonia</i> only	number of insects carrying pollen of this <i>Persoonia</i> + other spp. (including other <i>Persoonia</i> )	number of insects carrying pollen of other spp. only (including other <i>Persoonia</i> )	number of insects carrying no pollen
<i>P. acerosa</i> × <i>P. levis</i>				
<i>Leioproctus raymenti</i>	0	4	0	0
<i>P. arborea</i>				
<i>Callomelitta</i> sp.	0	0	1	0
<i>Exoneura</i> spp.	1	2	0	0
<i>Leioproctus (Filiglossa) davisii</i>	1	0	5	10
<i>Nomia</i> sp.	1	0	0	0
subtotals	3	2	6	10
<i>P. asperula</i>				
<i>Leioproctus (Filiglossa)</i> sp.	0	0	0	1
<i>L. speculiferus</i>	2	1	0	0
subtotals	2	1	0	1
<i>P. chamaepitys</i>				
<i>Chalicodoma</i> sp.	0	0	1	0
Eumenid wasp	0	0	1	0
<i>Hylaeus</i> sp.	0	0	0	1
<i>Leioproctus raymenti</i>	0	1	0	0
subtotals	0	1	2	1
<i>P. chamaepeuce</i>				
<i>Leioproctus (Filiglossa)</i> sp.	1	0	0	2
<i>P. glaucescens</i>				
<i>Apis mellifera</i>	1	0	0	0
<i>Callomelitta</i> sp.	0	0	1	0
<i>Exoneura</i> sp.	0	0	0	1
<i>Leioproctus carinatifrons</i>	7	0	0	0
<i>L. incanescens</i>	7	2	0	0
<i>L. speculiferus</i>	4	1	0	0
subtotals	19	3	1	1
<i>P. isophylla</i>				
<i>Apis mellifera</i>	6	0	0	1
<i>Hylaeus</i> sp.	0	0	0	1
<i>Lasioglossum brazieri</i>	0	1	0	0
<i>Leioproctus (Filiglossa)</i> sp.	0	0	0	1
<i>L. speculiferus</i>	12	0	0	1
<i>Nomia</i> spp.	2	1	0	1
Sphecid wasps	2	0	1	1
subtotals	22	2	1	6
<i>P. lanceolata</i>				
<i>Exoneura</i> sp.	1	0	0	1
<i>Leioproctus (Filiglossa)</i> sp.	2	0	0	2
<i>L. carinatifrons</i>	4	1	0	0
<i>L. incanescens</i>	3	3	0	0
<i>L. speculiferus</i>	4	7	0	0
subtotals	14	11	0	3
<i>P. laurina</i>				
<i>Leioproctus (Cladocerapis)</i> sp.	0	1	0	0
<i>P. levis</i>				
<i>Leioproctus carinatifrons</i>	0	1	0	0
<i>P. mollis</i>				
Coleoptera				
<i>Zonitis</i>	0	0	0	1
Hymenoptera				
<i>Amegilla</i> spp.	0	0	0	3
<i>Apis mellifera</i>	5	6	0	0
<i>Chalicodoma</i> spp.	1	2	0	2
<i>Exoneura</i> spp.	9	3	0	2

Plant and insect taxon	number of insects carrying pollen of this <i>Persoonia</i> only	number of insects carrying pollen of this <i>Persoonia</i> + other spp. (including other <i>Persoonia</i> )	number of insects carrying pollen of other spp. only (including other <i>Persoonia</i> )	number of insects carrying no pollen
<b><i>P. mollis</i> (continued)</b>				
<i>Homalictus urbanus</i>	0	1	0	0
<i>Lasioglossum repraesentans</i>	0	0	1	0
<i>Leioproctus</i> ( <i>Cladocerapis</i> ) sp.	0	0	0	1
<i>L. bipectinatus</i>	0	1	0	0
<i>L. carinatifrons</i>	3	1	0	0
<i>L. incanescens</i>	11	15	0	0
<i>L. speculiferus</i>	11	16	3	1
<i>L. (Filiglossa)</i> sp.	1	0	0	0
<i>Nomia</i> spp.	1	1	7	1
Ichneumonid wasp	0	1	0	0
<b>subtotals</b>	<b>42</b>	<b>47</b>	<b>11</b>	<b>11</b>
<b><i>P. microphylla</i></b>				
<i>Amegilla</i> sp.	1	0	0	0
<i>Apis mellifera</i>	0	2	0	0
<i>Leioproctus bipectinatus</i>	2	0	0	0
<i>L. incanescens</i>	4	4	0	0
<i>L. speculiferus</i>	1	0	0	0
<b>subtotals</b>	<b>8</b>	<b>6</b>	<b>0</b>	<b>0</b>
<b><i>P. myrtilloides</i> subsp. <i>myrtilloides</i></b>				
<i>Exoneura</i> spp.	0	6	0	0
<i>Hylaeus</i> spp.	0	0	0	1
<i>Homalictus holochorus</i>	0	0	0	1
<i>Leioproctus</i> ( <i>Cladocerapis</i> ) sp.	1	2	0	1
<i>L. carinatifrons</i>	3	0	0	0
<i>L. raymenti</i>	6	0	0	1
<i>L. speculiferus</i>	2	2	1	0
<i>Odyneurus</i> sp.	0	1	0	0
<i>Trigona carbonaria</i>	1	0	0	0
<b>subtotals</b>	<b>13</b>	<b>11</b>	<b>1</b>	<b>4</b>
<b><i>P. nutans</i></b>				
<i>Chalicodoma</i> spp.	0	3	1	0
<i>Leioproctus</i> ( <i>Cladocerapis</i> ) sp.	0	2	0	0
<i>L. incanescens</i>	0	2	1	1
<b>subtotals</b>	<b>0</b>	<b>7</b>	<b>2</b>	<b>1</b>
<b><i>P. oblongata</i></b>				
<i>Apis mellifera</i>	0	2	0	0
<i>Homalictus urbanus</i>	0	0	0	1
<i>Lasioglossum instabilis</i>	0	0	1	0
<i>Leioproctus raymenti</i>	0	0	0	1
<i>Trigona carbonaria</i>	4	1	0	1
<b>subtotals</b>	<b>4</b>	<b>3</b>	<b>1</b>	<b>3</b>
<b><i>P. oxycoccooides</i></b>				
<i>Apis mellifera</i>	1	0	0	0
<i>Exoneura</i> spp.	0	3	0	0
<i>Leioproctus speculiferus</i>	1	0	0	0
<b>subtotals</b>	<b>2</b>	<b>3</b>	<b>0</b>	<b>0</b>
<b><i>P. pinifolia</i></b>				
<i>Apis mellifera</i>	12	4	1	0
<i>Chalicodoma</i> spp.	0	3	2	0
<i>Exoneura</i> spp.	13	6	0	9
<i>Leioproctus</i> ( <i>Parasphecodes</i> ) sp.	0	1	0	0
<i>L. (Filiglossa)</i> spp.	10	1	0	4
<i>L. (Cladocerapis)</i> sp.	0	0	0	1
<i>L. incanescens</i>	0	1	0	0
<i>L. raymenti</i>	1	0	0	0
<i>L. speculiferus</i>	5	0	0	0
<i>Trigona carbonaria</i>	25	3	1	10
Sphecid wasp	0	0	0	1
<b>subtotals</b>	<b>66</b>	<b>19</b>	<b>4</b>	<b>25</b>

Table 5 (continued). Pollen load analyses of insect foragers collected on *Persoonia* species.

Plant and insect taxon	number of insects carrying pollen of this <i>Persoonia</i> only	number of insects carrying pollen of this <i>Persoonia</i> + other spp. (including other <i>Persoonia</i> )	number of insects carrying pollen of other spp. only (including other <i>Persoonia</i> )	number of insects carrying no pollen
<i>P. subvelutina</i>				
<i>Callomelitta</i> sp.	0	1	0	0
<i>Chalicodoma</i> sp.	0	1	0	0
<i>Exoneura</i> spp.	3	3	0	0
<i>Leioproctus</i> ( <i>Filiglossa</i> ) sp.	1	0	0	0
<i>L. speculiferus</i>	4	2	0	0
subtotals	8	7	0	0
<i>P. silvatica</i>				
<i>Leioproctus</i> ( <i>Cladocerapis</i> ) sp.	1	0	0	0
<i>L. (Filiglossa)</i> spp.	5	4	0	0
<i>L. incanescens</i>	0	1	0	0
<i>L. speculiferus</i>	8	12	0	0
subtotals	14	17	0	0
<i>P. virgata</i>				
<i>Amegilla</i> sp.	1	0	0	0
<i>Apis mellifera</i>	5	2	0	0
<i>Exoneura</i> spp.	1	0	1	1
<i>Homalictus urbanus</i>	0	0	0	1
<i>Hylaeus</i> spp.	1	0	0	7
<i>Leioproctus incanescens</i>	1	0	0	0
<i>L. speculiferus</i>	48	0	0	0
<i>Trigona carbonaria</i>	1	0	0	0
subtotals	58	2	1	9
<b>grand totals</b>	<b>276</b>	<b>148</b>	<b>30</b>	<b>77</b>
foraging ratios	0.520	0.279	0.056	0.145

Total Number of Foraging Insects = 531

Fig. 3. Pollen of *Persoonia mollis* subsp. *livens* in ventral hairs of a female *Leioproctus incanescens*,  $\times 509$ .



mouthparts between tepal seams towards the base of the nectar chamber. However, as males in the subgenus *Filiglossa* were observed to actually avoid *Persoonia* anthers they were not significant carriers of *Persoonia* pollen (Tables 5 and 7).

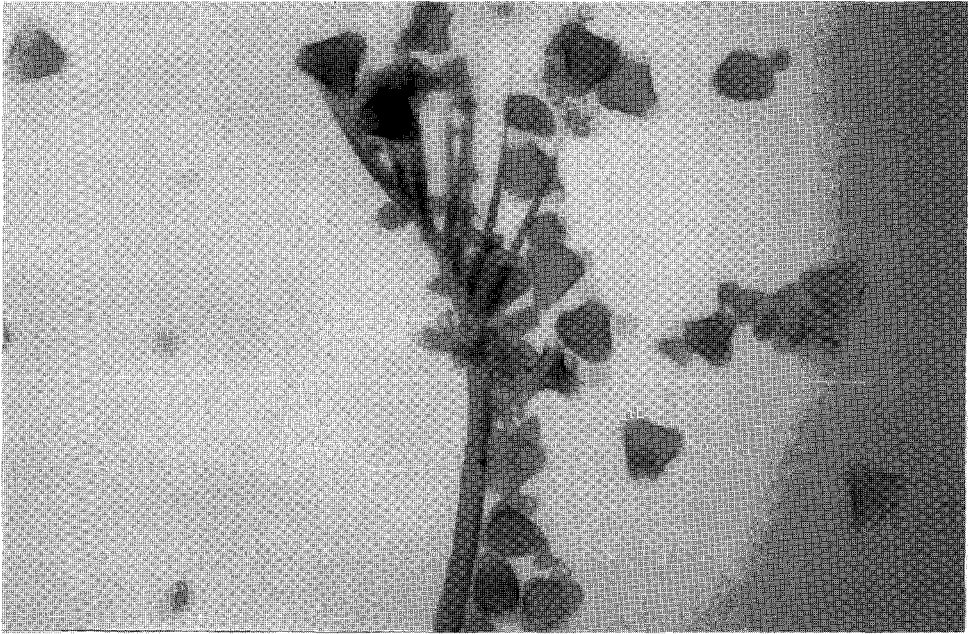


Fig. 4. Branched scopal hair of a female *Leiproctus speculiferus* carrying pollen of *Persoonia silvatica* (large triangles) and *Eucalyptus* spp (small triangles),  $\times 178$ .

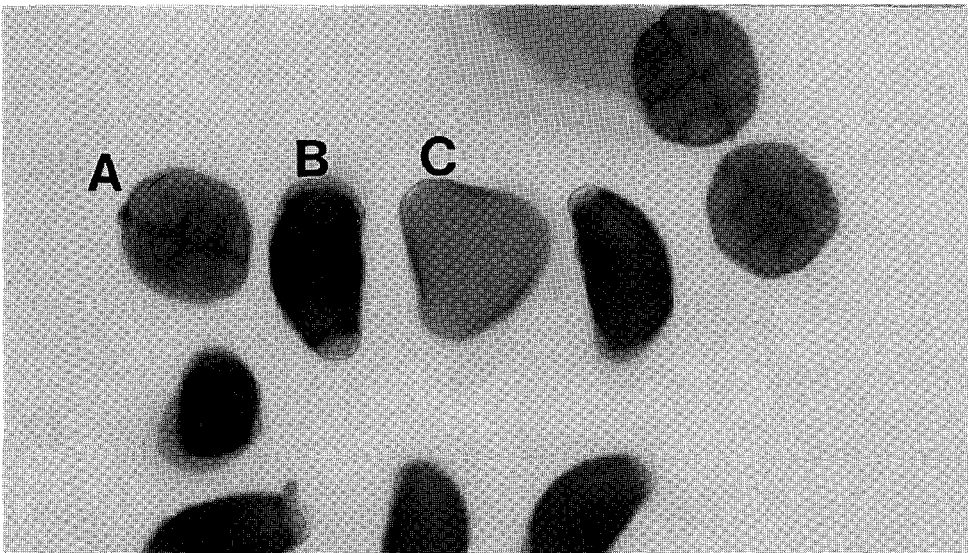


Fig. 5. Section of a mixed load of pollen taken from a female *Leiproctus carinatifrons* collected on the flower of *P. mollis* subsp. *nectens*. A, polyad of *Acacia* spp; B, pollen of *Banksia*; C, pollen of *Persoonia mollis*,  $\times 297$ .

**Table 6. Comparative sizes and foraging behaviours of insects on *Persoonia* species.**

Insect taxon	n	mean length (mm)	active pollen collector	depresses tepals
<b>Bees</b>				
<b>Anthophoridae</b>				
<i>Amegilla</i> spp.	6	12.5	–	+
<i>Exoneura</i> spp.	43	6.3	+–	+–
<b>Apidae</b>				
<i>Apis mellifera</i>	51	13.6	+	+
<i>Trigona carbonaria</i>	47	4.5	+	–
<b>Colletidae</b>				
<i>Callomelitta</i> spp.	3	9.0	+	+
<i>Hylaeus</i> spp.	11	5.0	+	–
<i>Leioproctus (Cladocerapis)</i>				
<i>L. bipectinatus</i>	3	10.5	+	+
<i>L. carinatifrons</i>	13	10.4	+	+
<i>L. incanescens</i>	43	10.5	+	+
<i>L. raymenti</i>	7	9.8	+	+
<i>L. speculiferus</i>	75	9.8	+	+
unidentified <i>Cladocerapis</i>	9	9.0	+	+
<i>Leioproctus (Filiglossa)</i>				
<i>L. davisii</i>	17	NM	+	–
unidentified <i>Filiglossa</i>	34	5.3	+	–
<b>Halictidae</b>				
<i>Homalictus holochorus</i>	1	6.0	+	–
<i>Homalictus urbanus</i>	1	4.0	–	–
<i>Lasioglossum (Chilalictus)</i>				
<i>L. brazieri</i>	1	10.0	+	+
<i>L. instabilis</i>	1	8.0	+	+
<i>L. repraesentens</i>	1	8.0	–	+
<i>Lasioglossum (Parasphecodes)</i>				
<i>Lasioglossum</i> sp.	1	11.0	+	+
<i>Nomia</i> spp.	15	8.6	+–	+
<b>Megachilidae</b>				
<i>Chalicodoma</i> spp.	13	11.0	–	+
<b>Wasps</b>				
Ichneumonid sp.	1	13.0	–	+
Eumenid sp.	1	10.0	–	+
<i>Odyneurus</i> sp.	1	15.0	–	+
Sphecid spp.	3	9.6	–	+
<b>Coleoptera</b>				
<i>Zonitis</i> sp.	1	12.0	–	–

\* Length combines males and females but columns on behaviour refer to females exclusively.

NM Not measured but estimated < 7 mm.

*Amegilla*, *Chalicodoma* and the larger wasp taxa were observed to depress the tepals and probe for nectar. They were not observed foraging on anthers or making active collections of pollen (Tables 5 & 6).

*Apis mellifera*, *Exoneura* species and *Leioproctus* (*Cladocerapis*) species were the only larger bees collected on *Persoonia* flowers that were regularly observed both to contact stigmas while foraging and to carry significant loads of *Persoonia* pollen (Tables 5, 6, 8, 9). Depositions of *Persoonia* pollen on these insects was the result of active and passive collection. Females in all three bee taxa were observed removing pollen from dehiscent anthers. All three taxa continued to contact the anthers and stigmas while depressing tepals to probe for nectar. Although these bees were the only common and consistent pollinators of *Persoonia* species, they also comprised over 83% of the 142 insects found to carry the pollen of *Persoonia* spp. mixed with the pollen of at least nine other pollen types (Table 9).

Workers of *Apis mellifera* and females of *Exoneura* species scraped *Persoonia* anthers with their forelegs, depositing pollen in their corbiculae or scopae respectively. Although males of *Leioproctus* (*Cladocerapis*) species were never observed to forage actively on *Persoonia* anthers, their bodies did contact the anthers when they depressed the tepals to probe for nectar (Table 6).

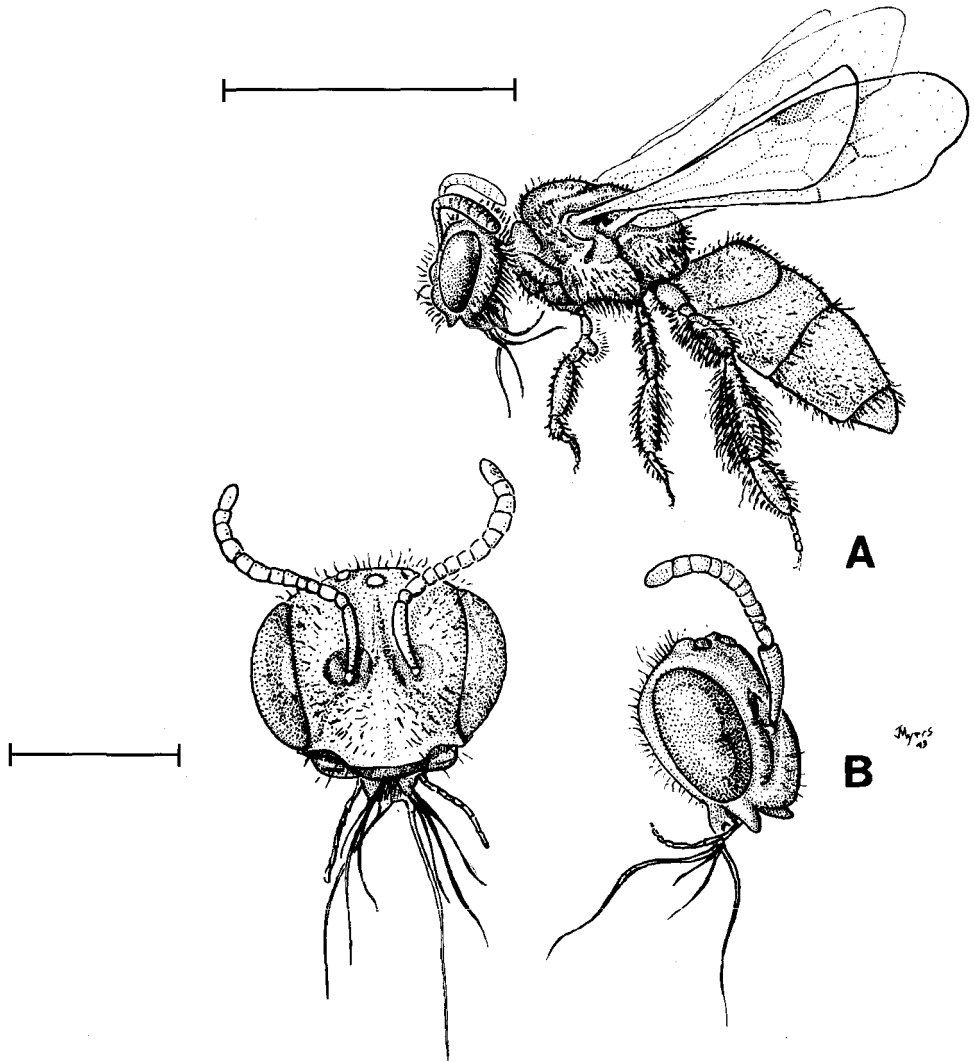
Females of *Leioproctus carinatifrons*, *L. incanescens* and *L. speculiferus* (*Cladocerapis*) showed the same stereotyped mode of floral foraging on *P. lanceolata*, *P. mollis* and *P. glaucescens* at the Hilltop site (cf. Maynard 1995). Typically, the bee landed on a flower, depressed a tepal, inserted its body halfway down the floral tube and probed for nectar. The head of a *Cladocerapis* bee contacted the style of the *Persoonia* flower and appeared to slide down the style as the bee pushed itself down the floral tube.

**Table 7. Comparative loads of *Persoonia* pollen carried by *Leioproctus* species of different genders.**

Bee taxon and gender	Number of <i>Persoonia</i> Grains Carried			
	0-24	25-50	50-100	> 100
<b><i>Leioproctus</i> (<i>Cladocerapis</i>)</b>				
<i>L. bipectinatus</i>				
males	0	0	1	0
females	0	0	0	2
<i>L. carinatifrons</i>				
males	0	3	0	3
females	0	0	1	12
<i>L. incanescens</i>				
males	1	0	0	2
females	1	0	0	53
<i>L. raymenti</i>				
males	0	1	2	4
females	2	0	1	4
<i>L. speculiferus</i>				
males	1	9	4	11
females	6	6	10	99
<b><i>Leioproctus</i> (<i>Filiglossa</i>)</b>				
males	8	1	1	0
females	11	2	6	16

After removing its body from the floral tube the bee reversed its position and clasped the single anther fused to the tepal it had first depressed. The bee then inserted the clawed tip of the tarsus of each foreleg into the apices of each longitudinal slit on opposite lobes of the same anther. The bee depressed its body forcing each pair of claws to slide down the full length of each longitudinal slit until they reached the base. The two claws that tip each tarsus expanded, raking pollen from the interior of each slit. The bee then retracted each tarsus (the claws now filled with pollen) and transferred the pollen to the second pair of legs. The second pair then transferred the pollen to the scopal hairs on the hind legs and ventral portion of the abdomen (cf. Maynard 1995).

In the majority of cases observed, after the bee collected pollen from one anther it would repeat the same nectar and pollen foraging behaviour by selecting a second,



**Fig. 6.** Female of *Leioproctus filamentosa*. **A**, whole insect showing scopal brushes on hind legs (scale = 2.5 mm); **B**, head in lateral and frontal views, showing elongated mouthparts (scale = 1 mm).

third or fourth tepal on the same flower. Less frequently, it would fly to another flower or leave the site. In each case observed the bee always depressed the tepal and probed for nectar before harvesting pollen from the tepal's anther.

Variations on this mode of behaviour were observed at all sites in which female *Leioproctus* (*Cladocerapis*) species were common foragers. However, it was only at the Hilltop site that we observed that a *Cladocerapis* female would regularly depress all four of the tepals and rake pollen from each of the four anthers on the same flower. It contacted the stigma in two ways while foraging on the same flower. First, the bee's thorax and abdomen made dorsal contact with the stigma while foraging for nectar. Second, the thorax and abdomen made ventral contact with the stigma when the bee extricated herself from the floral tube and reversed herself to confront the anther. This movement provided the stigma with direct contact with the pollen laden, scopal hairs on the third pair of legs and with the 'apron' of hairs clothing the base of the underside of the abdomen.

While bees in subgenus *Cladocerapis* and *Exoneura* species were the dominant pollinators of most *Persoonia* species they were too small to follow consistently from plant to plant within the study site. We did observe at the Big Badja Hill, Carrington Falls, Gungulla (Waterfall), Hilltop, Mt Tomah, Peats Ridge and Tianjara Falls sites that these two bee taxa would leave the flowers of one *Persoonia* shrub to visit those of its nearest neighbour. This occurred most often when the branches of different shrubs overlapped.

## Discussion

Bees and wasps appear to be the major foragers on the flowers of *Persoonia* species native to eastern Australia. Taxa representing five out of the seven families of bees recorded in Australia (sensu Michener & Houston 1991) were collected on 19 of the 20 species and one of the two hybrids in this study. However, only 23% of the insect taxa collected on *Persoonia* were both frequent visitors and consistent pollen vectors contacting dehiscent anthers and receptive stigmas while foraging for pollen and/or nectar. Field observations, insect collections and pollen load analyses indicate that only four or five out of the 26 taxa of Hymenoptera may be regarded currently as common or important pollinators of *Persoonia* species. This includes *Exoneura* species, perhaps three out of five *Leioproctus* (*Cladocerapis*) species and, possibly, the introduced honeybee (*Apis mellifera*).

The role of the naturalised, *A. mellifera*, as a cross-pollinator of *Persoonia* is difficult to interpret. Workers forage actively for *Persoonia* pollen and the body of the insect contacts the *Persoonia* stigma during pollen harvest or nectar consumption. However, as *A. mellifera* collects pollen it moistens grains with nectar and transfers them to corbiculae on the hindlegs moulding them into damp pellets. The sugar in the nectar will cause the grains to hydrate early so they will lose viability in transfer. The dense, claylike consistency of a corbicular pellet does not lend the compacted grains to easy transfer to a stigma particularly when they are now so compressed and then propped up on the hind tibia away from the lower, stigmatic surface. In contrast, female bees in the Anthophoridae, Halictidae and genus, *Leioproctus*, all carry their pollen loose in granular masses between hair tufts ornamenting the hindlegs and underside of the abdomen (Bernhardt 1984, 1989, 1995, Michener 1974). These bees may transfer *Persoonia* more easily when they scrape or rub the basal portion of their hindlegs or abdomens against the stigma while searching for nectar or dehiscent anthers. The effectiveness of naturalised, *A. mellifera*, as a pollinator of *Persoonia* would appear to depend on the quantity of grains that adhere to the bee's head and thorax but miss the combing process and transfer to the corbiculae.

The flowers of *Persoonia* species in south-eastern Australia do not really appear to be examples of generalist melittophily as have been described, for example, in Australian *Acacia* species (Bernhardt 1989). That is, while many taxa within the Hymenoptera forage on the flowers of *Persoonia* in eastern Australia comparatively few visit the flowers frequently enough, and/or carry loads of *Persoonia* pollen directly to stigmas, to be regarded as primary agents of cross-pollination. In contrast, almost every bee (representing 27 taxa in four bee families) can collect pollen from the simple, brushlike, inflorescences of an *Acacia* species and then contact stigmas when it visits florets on a second inflorescence bearing receptive stigmas (Bernhardt 1989).

The way in which *Leioproctus* (*Cladocerapis*) species harvest pollen from *Persoonia* anthers is atypical but the actual act of cross-pollination in *Persoonia* species appears similar to many other bee-pollinated angiosperms offering both nectar and pollen as edible rewards. That is, the pollination of *Persoonia* flowers appears to depend ultimately on whether bees contact both anthers and stigmas regularly while foraging actively for nectar and/or pollen (Barth 1985; Kearns and Inouye 1993).

Although the perianth appears superficially tubular in all *Persoonia* species studied the floral architecture really functions more like a gullet flower. The functional

**Table 8. Analyses of loads containing the pollen of four *Persoonia* spp. from bees collected at the Hilltop (*P. mollis* subsp. *nectens*, *P. glaucescens* and *P. lanceolata*) and Nerriga (*P. mollis* subsp. *livens*) sites.**

Bee taxon and <i>Persoonia</i> sp. on which bee was caught	Bees carrying pollen of two <i>Persoonia</i> spp.	Bees carrying pollen of one <i>Persoonia</i> sp.
<i>P. mollis</i> subsp. <i>livens</i>		
<i>Apis mellifera</i>	0	1
<i>Exoneura</i> sp.*	1	1
<i>Leioproctus speculiferus</i> *	2	1
subtotals	3	3
ratio of mixed foraging = 0.5		
<i>P. mollis</i> subsp. <i>nectens</i>		
<i>Homalictus urbanus</i>	0	1
<i>Leioproctus carinatifrons</i>	1	3
<i>L. incanescens</i>	0	5
<i>L. speculiferus</i>	4	2
<i>L. (Filiglossa)</i> sp.	0	1
subtotals	5	12
ratio of mixed foraging = 0.29		
<i>P. glaucescens</i>		
<i>Apis mellifera</i>	1	0
<i>Leioproctus carinatifrons</i>	3	4
<i>L. incanescens</i>	2	7
<i>L. speculiferus</i>	3	2
subtotals	9	13
ratio of mixed foraging = 0.31		
<i>P. lanceolata</i>		
<i>Exoneura</i> sp.	0	1
<i>Leioproctus carinatifrons</i>	1	4
<i>L. incanescens</i>	1	5
<i>L. speculiferus</i>	1	10
<i>L. (Filiglossa)</i> spp.	0	2
subtotals	3	22
ratio of mixed foraging = 0.11		
<b>grand total</b>	<b>20</b>	<b>50</b>
<b>grand ratio = 0.28</b>		

\* Bees carried pollen of *P. microphylla*

morphology of the perianth of a *Persoonia* flower resembles that of bilaterally symmetrical flowers of Lamiaceae and Scrophulariaceae where insects must depress the outer lobes of the corolla to gain access to nectar concealed at the base of a floral throat or spur (Faegri and van der Pijl 1979; Barth 1985). Therefore, a short-tongue colletid exceeding 9 mm appears to be as efficient a vector of *Persoonia* pollen as a long-tongue anthophorid with a mean body length of 7 mm or less. Both forage actively for pollen. Both are sufficiently dexterous, heavy and long enough to depress the tepals and then gather nectar from the base of the flower.

Consequently, floral presentation in *Persoonia* must exclude as dependable pollinators most of the smallest bees such as *Trigona carbonaria* and *Leioproctus (Filiglossa)* species. Their mouthparts reach the nectar chamber of most *Persoonia* species and contact the anthers while foraging. However, the bodies of these insects are too small to regularly contact the stigmas while foraging for pollen and/or nectar, despite their high density and repeated visitations of flowers in some *Persoonia* populations. Cross-pollination by *Trigona* may be confounded further by the presence of corbiculae and pollen pellets as described, above, in *A. mellifera* (Michener 1974).

On the other hand, while an increase in physical size ensures a native insect's access to the nectar chamber, encouraging passive contact with the stigma, it does not guarantee that the same insect will always transport loads of *Persoonia* pollen. Although *Amegilla*, *Chalicodoma* species, and some wasps are longer than *Exoneura* and *Leioproctus (Cladocerapis)* species by 3–4 mm, they appear to be inferior pollen vectors. These larger native hymenopterans contact stigmas while depressing the tepals but they were not observed to forage actively for pollen on *Persoonia* anthers. Their pollen load analyses showed they acquire little pollen while collecting nectar.

Therefore, while tube length varies greatly between *Persoonia* species of eastern Australia there is little evidence of a correlation between the physical length of the floral tube and the body length or tongue length of its true pollinators. Based on measurements of the three to four, native taxa of common pollen vectors the differing lengths of floral tubes between *Persoonia* species does not appear to have encouraged the segregation of different pollinator species to different *Persoonia* species in eastern Australia. Since access to nectar is based on the physical strength and foraging behaviour of the bee a correlation between the actual length of the hinged tepals *Persoonia* species and the length of their pollinators' probosces should not be anticipated.

Perhaps both the sheer length and/or degree of constriction of the tepals around the nectar chamber helps to restrict the loss of nectar reserves to smaller thieves. *Filiglossa* and *Trigona* species have long mouthparts for their small size. Directional selection may have favoured increased tepal length where nectar thieves occur at higher densities. For example, the flower of *Persoonia arborea* has the longest floral tube and its exposed ovary forms a cap over the narrowed, nectar chamber. *Persoonia arborea* grows in an area where it is visited by swarms of *Leioproctus (Filiglossa) davisi* (K. Walker, personal communication). These bees don't contact the flower's stigma and are shown to be poor, pollen vectors in this study. In *Persoonia pinifolia* the long tepals appear tightly wrapped around the style above the pouched, nectar chamber. *Trigona carbonaria* is the most commonly collected and observed visitor on flowers of the *P. pinifolia* population in this study.

This is the first study to compare the pollen carrying capacity of male and female bees. While most males in the subgenus *Cladocerapis* fail to carry heavier loads than females, 85% of these males carry from 25 to > 100 grains of *Persoonia* pollen although none forage actively for pollen. *Cladocerapis* males then are actually superior vectors of *Persoonia* pollen than nectar foraging females of *Amegilla* and *Chalicodoma* species. This also suggests that, at certain sites, *Cladocerapis* males are probably far more important

as pollinators of *Persoonia* species than female, pollen-foraging, Halictidae (*Lasioglossum* and *Nomia* species) because collections suggested that the density of pollen laden, *Cladocerapis* males was appreciably higher than halictid females. Active pollen collection by some halictids was inferior to passive collection by some *Cladocerapis* males since only 40% of female *Nomia* bees carried significant loads of *Persoonia* pollen.

The evolution of *Leioproctus* species dependent on floral rewards produced by *Persoonia* flowers has resulted in two quite different foraging syndromes. Within subgenus *Cladocerapis*, larger body size, reduction of facial hairs, and an unusual mode of pollen collection by females contribute to mutual benefits for both the bees and the *Persoonia* flowers they pollinate.

In direct contrast, body size is reduced, mouthparts are much elongated or ornamented with long hairs and foraging behaviour encourages basal probing of the nectar chamber in subgenus *Filiglossa*. This form of floral parasitism does not obviously benefit the reproductive ecology of *Persoonia* and, as mentioned above, may have encouraged evolution of longer tepals, or style-clasping tepals, or tube-blocking ovaries. Two congeneric bees then occupy the same trophic levels but

**Table 9. Identification of pollen grains of bees and wasps carrying *Persoonia* mixed with the pollen of at least one other species.**

Insect Taxon	Pollen Taxa									
	AC	AS	BA	EP	LA	MY	PL	PE	UD	UM
<i>Apis mellifera</i>	0	1	0	0	0	13	0	13	3	0
<i>Callomelitta</i> sp.	0	0	0	0	0	0	1	0	1	0
<i>Chalicodoma</i> spp.	4	2	0	0	1	4	0	10	8	0
<i>Exoneura</i> spp.	2	5	0	0	1	13	0	18	7	0
<i>Homalictus urbanus</i>	1	1	0	0	0	1	0	1	0	0
<i>Ichneumonid</i> wasp	0	0	0	0	0	1	0	1	0	0
<i>Lasioglossum brazieri</i>	0	1	0	0	0	0	0	1	0	0
<i>L.</i> sp. ( <i>Parasphcodes</i> )	0	0	0	0	0	1	0	1	1	0
<i>Leioproctus</i> ( <i>Cladocerapis</i> ) spp.	2	0	0	0	0	4	0	5	2	0
<i>L. bipectinatus</i>	0	0	0	0	0	1	0	1	0	0
<i>L. carinatifrons</i>	1	0	1	0	0	3	0	4	1	0
<i>L.</i> ( <i>Filiglossa</i> ) spp.	0	0	0	0	0	1	0	3	2	1
<i>L. incanescens</i>	0	0	1	0	0	27	2	30	1	0
<i>L. raymenti</i>	0	0	0	0	0	2	0	6	6	0
<i>L. speculiferus</i>	0	0	0	0	0	28	7	41	13	0
<i>Nomia</i> spp.	0	0	1	1	1	1	0	2	1	0
<i>Odyneurus</i> sp.	0	0	0	0	0	1	0	1	1	0
<i>Trigona carbonaria</i>	0	0	0	0	0	0	0	4	4	0
<b>Totals</b>	<b>10</b>	<b>10</b>	<b>3</b>	<b>1</b>	<b>3</b>	<b>101</b>	<b>10</b>	<b>142</b>	<b>51</b>	<b>1</b>

AC = *Acacia*, AS = Asteraceae (*Brachycome*, *Hypochaeris*), BA = *Banksia* EP = Epacridaceae (*Epacris* sp. and *E. pulchella*), LA = Unidentified Lamiaceae (*Prostanthera* type); MY = Myrtaceae (*Eucalyptus*, *Leptospermum*), PE = *Persoonia* spp.; PL = *Platysace lanceolata* (Apiaceae), UD = Unidentified dicots (triporate and tricolporate); UM = Unidentified monocot (Iridaceae type)



may avoid direct contact with each other. This may reduce the immediate effects of direct competition for the same energy source because foraging for the same nectar occurs at opposite ends of the same flowers.

How interdependent, though, are *Persoonia* species, their true pollinators and their nectar/pollen thieves? *Exoneura* species have long been known to be polylectic foragers in Australia and we expected alien mixtures of pollens carried by *Exoneura* bees caught on *Persoonia* flowers based on the foraging record for this bee genus (Rayment 1935; Armstrong 1979; Bernhardt 1984, 1989). Some *Exoneura* species regularly visit both nectariferous taxa (Asteraceae, Myrtaceae, papilionoid legumes, *Spyridium*) and taxa that lack floral nectaries but produce copious pollen (*Acacia*, *Dianella*, *Hibbertia*) during the same foraging bout (Bernhardt 1989, 1995, and in progress).

However, pollen load analysis in this study also shows that neither *Cladocerapis* nor *Filiglossa* bees always forage exclusively on *Persoonia*. Despite unusual morphological and ethological modifications that might be associated with foraging on *Persoonia* flowers (Maynard 1995), members of the two subgenera of *Leioproctus* take nectar and pollen from other plants. We must presume that mixed loads of pollen found in the scopae of such bees will still be used to feed larvae.

*Cladocerapis* bees are dominant pollinators of *Persoonia* species at most study sites due, in part, to sheer numbers. Their mode of pollen collection is unlike any of the other prospective pollinators of *Persoonia*. However, there is still little direct evidence, at present, to indicate that *Persoonia* flowers and *Cladocerapis* bees are models of long-term co-adaptation. First, pollen load analyses of *Cladocerapis* bees indicate that *Persoonia* is not their exclusive source of pollen. *Cladocerapis* bees are facultative, not obligate, oligoleges (*sensu* Michener 1979) of *Persoonia* flowers.

Second, taxonomists separate *Exoneura* from *Leioproctus* by family and the mouthparts of the two genera differ greatly in length. That is why sugar analyses of nectar of two *Persoonia* species seem so contradictory. Sucrose-dominant nectars like those of the two *Persoonia* species analysed are most often associated with long-tongue bees (Baker and Baker 1989) like members of the Apidae (e.g. *Apis mellifera*) and Anthophoridae (e.g. *Exoneura*). That may explain, in part, why naturalised *A. mellifera* forages so often on *Persoonia*. If the nectar of *Persoonia* flowers were hexose-dominant or hexose-rich then exclusive pollination by short-tongue bees might be expected (Kenrick et al. 1987; Baker and Baker 1989). While eastern *Persoonia* species and *Cladocerapis* bees certainly show some co-adapted features their interrelationship is not mutually exclusive.

Of wider interest, note that the bees that forage preferentially on sympatric, co-blooming *Persoonia* species at Hilltop and Nerriga showed little evidence of resource partitioning. In his work on bee foraging in mediterranean habitats in the western Hemisphere Moldenke (1976) concluded that resource partitioning by bees showed a positive correlation with floral diversity. That is, as floral diversity increases over time, bees will visit the flowers of fewer plant species. Bees then avoid interspecific competition for the same pollen and/or nectar resources.

Bernhardt (1989) did not find this correlation while studying the pollination ecology of *Acacia* species in south-eastern Australia. To the contrary, as floral diversity increased over the season, bees collected on *Acacia* species were more likely to carry the pollen of other co-blooming angiosperms. At the time, this was understood to be an exception to the rule, reflecting a narrow reward system since *Acacia* species in Australia lack floral nectaries. Since most bees that collect *Acacia* polyads are generalist foragers it was assumed that nectar from co-blooming taxa was essential to provide these bees with sufficient chemical energy to support continued foraging for pollen on nectarless *Acacia*. This should not have happened on *Persoonia* flowers at the Hilltop site. The flowers of each of the sympatric, *Persoonia* species sampled should have been dominated

by only one *Cladocerapis* species if Moldenke's predictions extend beyond the Californian flora. Instead, collections indicated that there was no obvious domination of a *Persoonia* species by one of each of the three *Cladocerapis* species. Pollen load analyses indicated that some members of all three *Cladocerapis* species continued interspecific foraging on *Persoonia* at Hilltop. Perhaps resource partitioning by bees can occur only if floral diversity and density increases while bee diversity and density remains constant.

We may confirm then that the high frequency of F1 hybrids recorded between *Persoonia* species in eastern Australia is based on the general weakness of all pre-zygotic barriers associated with interspecific isolation. *Persoonia* species in eastern Australia are often sympatric and floral phenology shows a broad overlap. The mere presence of first generation hybrids indicates that some parent species are intercompatible. Different suites of floral characters in *Persoonia* such as floral tube length, anther colour and differing scents do not visibly discourage interspecific foraging by the four to five taxa of major pollinators.

At the Hilltop site the same three *Leioproctus* (*Cladocerapis*) species were collected on each of the three, co-blooming *Persoonia* species. At Nerriga, the most common pollinator, *L. incanescens*, was collected on co-blooming *P. microphylla* and *P. mollis*. When native pollinators fail to discriminate between the flowers of shrubs in the same genus recurrent hybridisation cannot be blamed exclusively on the naturalised *A. mellifera*.

When *Persoonia* species are sympatric and have overlapping flowering periods, up to 28% of their primary pollinators make interspecific foraging bouts. This helps to explain the high frequency of F1 hybrids in *Persoonia* in eastern Australia. In some other angiosperm genera (e.g. *Iris*, *Phlox*, *Opuntia*, *Quercus*) the comparative lack of interspecific isolation has encouraged introgression or microspeciation (see review in Futuyma 1986). The comparative lack of autopoloidy and backcrossing between parents and first generation hybrids in *Persoonia* suggests that postzygotic barriers (eg. F1 sterility or poor survival rate) may be more important in the maintenance of interspecific isolation in this genus.

Under these circumstances the genus *Persoonia* in eastern Australia may represent a species flock (sensu Mayr 1963). This section of the genus would have radiated rapidly during the Tertiary (Weston 1981, Truswell 1990). With the retreat of rainforests and moist *Nothofagus* forests, *Persoonia* might have undergone rapid speciation within the expanding and fragmenting shrublands and eucalypt forests (Truswell 1990). Just as the diversification of the orchid genus, *Thelymitra*, is identified by the key innovation of fusion of the column wings above and behind the fertile anther (Burns-Balogh & Bernhardt 1988; Bernhardt 1993), diversification within *Persoonia* may have depended, in part, on the evolution of basally hinged tepals forming a nectar chamber under the stalked ovary.

The Persoonioideae lack such derived reproductive features as the massive inflorescence, protostigma, biporate pollen grain, reinforced-wiry styles, zygomorphic nectary found elsewhere in the family. It is tempting to speculate that insect-pollination is ancestral to the Proteaceae with vertebrate pollination secondarily derived. This recurrent trend in floral evolution has been proposed repeatedly for other families including the Polemoniaceae (Grant and Grant 1965), Fabaceae sens. lat. (Arroyo 1981) and the Orchidaceae (Dressler 1981).

Of course, this hypothesis must be treated with considerable caution. *Persoonia* pollination does not follow the patterns of generalist entomophily described, for example, in the relictual magnolioids and their allies. In these families pollination is achieved by the much broader exploitation of a wide range of insects in different Orders (Hymenoptera, Coleoptera, Lepidoptera, Thysanoptera, Diptera). These insects have small bodies and often lack forelegs modified to manipulate anthers (Barth

1985; Bernhardt and Thien 1987; Thien et al. 1994). The *Persoonia* species of eastern Australia have a much more specialised system of pollination and recruit relatively few of the many genera of native bees as true pollinators. It is unlikely, then, that *Persoonia* sens. strict. can be used as a specific model to predict ancestral modes of pollination in the Proteaceae.

### Acknowledgements

Research was funded by two Fellowships to P. Bernhardt (1990–1992 and 1994) provided by the Royal Botanic Gardens and Domain Trust, Sydney. We would like to thank John Myers for drawing Figs 1, 2 and 6. Particular thanks are expressed to Ms Natasha Baczocha, Mr T. Hawkeswood, Ms Denise Day, Ms Catriona McPhee and Dr K. Walker who assisted in the collection and preparation of insect specimens and helped to record data over three seasons. Drs B.G. Briggs, S.L. Krauss, G.V. Maynard and Peter Wilson provided helpful comments on the manuscript; we remain responsible for residual deficiencies. We gratefully acknowledge the advice, encouragement and pioneering research of Dr L.A.S. Johnson on the Proteaceae and on *Persoonia* in particular.

### References

- Armstrong, J.A. (1979) Biotic pollination mechanisms in the Australian flora — a review. *New Zealand J. Bot.* 17: 467–508.
- Arroyo, M.T.K. (1981) Breeding systems and pollination in Leguminosae. Pp. 723–769 in R.M. Polhill and P.H. Raven (eds.), *Advances in Legume Systematics*, Part 2. (Royal Botanic Gardens, Kew: London).
- Baker, H.G. and Baker, I. (1989) The predictive value of nectar chemistry to the recognition of pollinator types. *Israel J. Bot.* 39: 157–166.
- Barth, F.G. (1985) *Insects and Flowers: the Biology of a Partnership* (Princeton Univ. Press: Princeton).
- Bernhardt, P. (1984) The pollination biology of *Hibbertia stricta* (Dilleniaceae). *Pl. Syst. Evol.* 147: 266–377.
- Bernhardt, P. (1988) *Thelymitra*. Pp. 146–154 in G.J. Harden (ed.), *Flora of New South Wales*, vol 4 (New South Wales Univ. Press: Kensington).
- Bernhardt, P. (1989) The floral ecology of Australian *Acacia*. Pp. 127–155 in C.H. Stirton and J.L. Zarruchi (eds.) *Advances in Legume Biology* (Missouri Botanical Garden: St Louis).
- Bernhardt, P. (1995) The floral ecology of *Dianella caerulea* var. *assera* (Phormiaceae). *Cunninghamia* 4: 9–20.
- Bernhardt, P. and Thien, L.B. (1987) Self-isolation and insect pollination in the primitive angiosperms: new evaluations of older hypotheses. *Pl. Syst. Evol.* 156: 159–176.
- Buchmann, S.L., Jones, C.E. and Colin, L.J. (1978) Vibratile pollination of *Solanum douglasii* and *S. xanthi* (Solanaceae) in southern California. *Wasmann J. Biol.* 35: 1–25.
- Burns-Balogh, P. and Bernhardt, P. 1988. Floral evolution and phylogeny in the tribe Thelymitreae (Orchidaceae: Neottioideae). *Pl. Syst. Evol.* 156: 19–47.
- Carolin, R.C. (1961) Pollination of the Proteaceae. *Aust. Mus. Mag.* Sept. 1961: 371–374.
- Collins, B.G. and Rebelo, T. (1987) Pollination biology of the Proteaceae in Australia and southern Africa. *Aust J. Ecol.* 12: 387–421.
- Dressler, R. (1981) *The Orchids; Natural History and Classification* (Harvard Univ. Press: Cambridge, Mass.).
- Faegri, K. and van der Pijl, L. (1979) *The Principles of Pollination Ecology*, 3rd edn. (Pergamon Press: Oxford).
- Feuer, S. 1986. Pollen morphology and evolution in the Persoonioideae, Sphalmioideae and Carnarvonioideae (Proteaceae). *Pollen et Spores* 28: 123–156.
- Futuyma, D.J. (1986) *Evolutionary Biology*, 2nd edn. (Sinauer Associates: Sunderland, Mass.).
- Grant, V. and Grant, K.A. (1965) *Flower Pollination in the Phlox Family* (Columbia Univ. Press: New York).

- Hopper, S.D. and Burbidge, A.A. (1982) Relative importance of birds and mammals as pollinators of a banksia and a eucalypt. Pp. 67–75 in J.A. Armstrong, J.M. Powell, and A.J. Richards (eds.), *Pollination and Evolution* (Royal Botanic Gardens: Sydney).
- Hopper, S.D. and Burbidge, A.A. (1986) Speciation of bird-pollinated plants in south-western Australia. Pp. 20–31 in H. Ford and D.C. Paton (eds.) *The Dynamic Partnership: Birds and Plants in Southern Australia* (Govt. Printer: Adelaide).
- Johnson, L.A.S. and Briggs, B.G. (1975) On the Proteaceae — the evolution and classification of a southern family. *Bot. J. Linn. Soc.* 70: 83–182.
- Kearns, C.A. and Inouye, D.W. 1993. *Techniques for Pollination Biologists* (Univ. Press Colorado: Niwot).
- Kenrick, J., Bernhardt, P., Marginson, R., Beresford, G., Knox, R.B., Baker, I. and Baker, H.G. (1987) Pollination-related characteristics in the mimosoid legume *Acacia terminalis* (Leguminosae). *Pl. Syst. Evol.* 157: 49–62.
- Krauss, S.L. (1994a) Preferential outcrossing in the complex species *Persoonia mollis* R. Br. (Proteaceae). *Oecologia* 97: 256–264.
- Krauss, S.L. (1994b) Restricted gene flow within the morphologically complex species *Persoonia mollis* (Proteaceae): contrasting evidence from the mating system and pollen dispersal. *Heredity* 73: 142–154.
- Law, B.S. (1994) *Banksia* nectar and pollen: dietary items affecting the abundance of the common blossom bat, *Syconycteris australis*, in southeastern Australia. *Austral. J. Ecol.* 19: 425–434.
- Maynard, G.V. (1992) Revision of *Leioproctus* (*Cladocerapis*) Cockerell (Hymenoptera: Colletidae). *J. Aust. Ent. Soc.* 31: 1–11.
- Maynard, G.V. (1994) Revision of *Leioproctus* (*Filiglossa*) Rayment (Hymenoptera: Colletidae). *J. Aust. Ent. Soc.* 33: 299–304.
- Maynard, G.V. (1995) Pollinators of Australian Proteaceae. *Flora of Australia* 16: 30–36.
- Mayr, E. (1963) *Animal Species and Evolution* (Harvard Univ. Press: Cambridge, Mass.).
- Michener, C.D. (1974) *The Social Behavior of the Bees* (Belknap Press: Cambridge, Mass.).
- Michener, C.D. and Houston, T.F. (1991) Superfamily Apoidea. Pp. 993–1000 in *Insects of Australia* 2nd edn. (Melbourne Univ. Press: Carlton).
- Michener, C.D. (1979) Biogeography of the bees. *Ann. Missouri Bot. Gard.* 71: 17–29.
- Moldenke, A.R. (1976) Evolutionary history and diversity of the bee faunas of Chile and Pacific North America. *Wasmann J. Biol.* 34: 147–178.
- Paton, D.C. (1985) Evolution of bird pollination in Australia. Pp. 32–41, in H. Ford and D.C. Paton (eds.) *The Dynamic Partnership: Birds and Plants in Southern Australia* (Govt. Printer: Adelaide).
- Pyke, G.H. and Waser, N.M. (1981) The production of dilute nectars by hummingbird and honeyeater flowers. *Biotropica* 13: 260–270.
- Rayment, T. (1935) *A Cluster of Bees* (Endeavour Press: Sydney).
- Rayment, T. (1950) New bees and wasps — part XV. *Victorian Naturalist* 67: 101–111.
- Rayment, T. (1959) A new genus of bees in the family Colletidae. *Australian Zoologist* 12: 324–329.
- Richards, A.J. (1986) *Plant Breeding Systems* (Allen and Unwin: London).
- Sussman, R.W. and Raven, P.H. (1978) Pollination by lemurs and marsupials: an archaic co-evolutionary system. *Science* 200: 731–734.
- Thien, L.B., Ellgaard, E.G., Devall, M.S., Ellgaard, S.E. and Ramp, P.F. (1994) Population structure and reproductive biology of *Saururus cernuus* L. (Saururaceae). *Pl. Spec. Biol.* 9: 47–55.
- Trusswell, E.M. (1990) Australian Rainforests: The 100 million year record. Pp. 7–22, in Webb, L.J. and Kikkawa, J. (eds.) *Australian Tropical Rainforests: Science — Values — Meaning* (CSIRO Publications: East Melbourne).
- Turner, V. (1982) Marsupials as pollinators in Australia. Pp. 55–66, in J.A. Armstrong, J.M. Powell and A.J. Richards (eds.), *Pollination and Evolution* (Royal Botanic Gardens: Sydney).
- Weston, P.H. (1983) *The systematics and biogeography of the Persooniinae (Proteaceae)* (unpublished Ph.D. thesis: Univ. Sydney).
- Weston, P.H. (1991) *Persoonia*. Pp. 3–19 in G.J. Harden (ed.), *Flora of New South Wales*, vol. 2 (New South Wales Univ. Press: Kensington).
- Weston, P.H. (1994) The Western Australian species of subtribe Persooniinae (Proteaceae: Persoonioideae: Persoonieae). *Telopea* 6: 51–165.
- Weston, P.H. and Johnson, L.A.S. (1991) Taxonomic changes in *Persoonia* (Proteaceae) in New South Wales. *Telopea* 4: 269–306.

## Appendix — Study Sites

*Persoonia acerosa* (PHW 1954), *P. levis* (PHW 1956), *Persoonia acerosa* × *P. levis* (PHW 1955). Bells Line of Road, 4.3 km W of turn-off to Mt Tomah Botanic Garden, 33°33'00"S 150°23'41"E; dry sclerophyll forest dominated by *Eucalyptus piperita* and *E. sclerophylla*; understorey with *Gahnia*, *Platysace*, *Acacia terminalis*, *A. oblongifolia*, *Petrophile pulchella*, *Epacris*, *Telopea speciosissima*, *Leptospermum trinervium*, *Polyscias sambucifolia*, *Pimelea*, *Ozothamnus*.

*Persoonia arborea* (K. Walker s.n.). About 9–15 km W of Mt Baw Baw, 37°50'S 146°17'E, alt. 930 m; wet sclerophyll forest, shrubby understorey and subcanopy of *P. arborea*.

*Persoonia asperula* (PHW 1763), *P. chamaepeuce* (PHW 1762). One km S of Pikes Saddle, 36°59'40"S 149°34'00"E, alt. 1280 m; dry sclerophyll woodland dominated by *Eucalyptus pauciflora*; understorey dominated by *Oxylobium ellipticum*, *Persoonia silvatica* and the two other *Persoonia* species.

*Persoonia chamaepitys* (PHW 1738), *P. laurina* subsp. *laurina* (PHW 1274), *P. levis*, *P. mollis* subsp. *mollis* (PHW 103), *P. myrtilloides* subsp. *myrtilloides* (PHW 1739). Evans Lookout Road, 0.7 km WSW of Evans Lookout, 33°39'00"S 150°19'10"E, alt. 975 m; dry sclerophyll forest dominated by *Eucalyptus sclerophylla*, *E. sieberi*; shrubby understorey with six *Persoonia* spp., *Acacia obtusifolia*, *Lambertia formosa*, *Leptospermum trinervium*, *Telopea speciosissima*.

*Persoonia glaucescens* (PHW 1774), *P. lanceolata* (PHW 1776), *P. mollis* subsp. *nectens* (PHW 1775). Approximately 0.3 km N of Banksia Street, on West Road Fire Trail, Hill Top, 34°20'30"S 150°29'00"E, Alt. 560 m; dry sclerophyll forest dominated by *Corymbia gummifera*, *Eucalyptus piperita*, *E. sclerophylla*, *E. sparsifolia*, *E. sieberi*, *E. punctata*; shrubby understorey with three *Persoonia* species listed above, *P. laurina* subsp. *intermedia*, *Banksia spinulosa*, *Hakea sericea*, *Acacia obtusifolia*, *A. terminalis*, *Daviesia corymbosa*, *Lambertia formosa*, *Eriostemon australasius*.

*Persoonia isophylla* (PHW 1781). Greta Road, 1.0 km W of junction with Bumble Hill Road, Bumble Hill, 33°14'30"S 151°14'45"E, alt. 340 m; dry sclerophyll forest dominated by *Corymbia gummifera*, *Eucalyptus haemastoma*, *E. oblonga*; shrubby understorey with *P. isophylla*, *P. levis*, *Angophora hispida*, *Lambertia formosa*, *Leptospermum trinervium*, *Petrophile pulchella*.

*Persoonia isophylla* (PHW 1783). 2.8 km S of Peats Ridge, 33°20'30"S 151°13'45"E. alt. 280 m; disturbed dry sclerophyll forest dominated by *Corymbia gummifera*, *Eucalyptus haemastoma*, *E. oblonga*, shrubby understorey with *P. isophylla*, *P. levis*, *P. lanceolata*, *Lambertia formosa*, *Hakea gibbosa*, *H. sericea*, *Leptospermum trinervium*, *Epacris pulchella*, *Petrophile pulchella*, *Banksia serrata*, *Telopea speciosissima*.

*Persoonia laurina* subsp. *laurina* (PHW 1730), *P. nutans* (PHW 1731). Penrith Road, 2.3 km S of Springwood turn-off, 33°41'40"S 150°40'15"E, alt. 20 m.; dry sclerophyll forest dominated by *Angophora bakeri*, *Eucalyptus sclerophylla*, with a shrubby understorey of *P. nutans*, *P. laurina*, *Banksia serrata*, *Ricinocarpus pinifolius*, *Leptospermum trinervium*, *Hibbertia diffusa*.

*Persoonia microphylla* (PHW 1768), *P. mollis* subsp. *livens* (PHW 1769), *P. microphylla* × *P. mollis* subsp. *livens* (PHW 1424). Nerriga–Goulburn road, 0.7 km ESE of Nerriga–Braidwood road, 35°08'40"S 150°03'30"E, alt. 600 m; open, disturbed roadside reserve through pasture with remnant dry sclerophyll forest with two *Persoonia* spp. and their hybrids, *Eucalyptus dives*, *E. mannifera*, *Banksia marginata*, *Acacia decurrens*, *A. rubida*, *Allocasuarina littoralis*.

*Persoonia mollis* subsp. *ledifolia* (PHW 1778), *P. oxycoccoides* (PHW 1777). 1.0 km ENE of Carrington Falls, Budderoo National Park, 34°37'00"S 150°39'30"E, alt. 570 m; dry sclerophyll woodland dominated by *Eucalyptus sieberi*, *E. piperita*, shrubby, sedgy understorey with two *Persoonia* species listed above, *P. laurina* subsp. *leiogyna*, *P. levis*, *Banksia paludosa*, unidentified Epacridaceae.

*Persoonia mollis* subsp. *leptophylla* (PHW 1771). Tianjara Falls, 35°06'40"S 150°19'50"E, alt. 500 m; dry sclerophyll woodland with *Corymbia gummifera*, *Eucalyptus consideniensis*, dense shrubby understorey with *P. mollis*, *Banksia paludosa*, *Acacia obtusifolia*, *Allocasuarina littoralis*, *Lambertia formosa*, *Lomatia myricoides*, *Leptospermum rotundifolium*, *Kunzea ambigua*.

*Persoonia mollis* subsp. *livens* (P. Kodala 4076). 3 km S of Boro River crossing on Mayfield to Braidwood road, 23°14'S 149°48'E. Gently undulating plain, on chalky sand over Ordovician metasediments. Open eucalypt woodland with a sparse understorey with *Eucalyptus rossii*, *E. mannifera*, *Leptospermum trinervium*, *Banksia spinulosa*, *Restio fimbriatus*.

*Persoonia oblongata* (PHW 1748). Richmond–Springwood road, 2.0 km E of turn-off to Winmalee shopping centre, 33°40'20"S 150°37'40"E. Ridge-top. Dry sclerophyll forest dominated by *Eucalyptus sparsifolia*, *Corymbia gummifera*, *Angophora costata*, *Allocasuarina littoralis*; shrubby understorey with *Persoonia pinifolia*, *P. levis*, *P. linearis*, *P. oblongata*. Fine-grained sandstone or coarse-grained shale?

*Persoonia pinifolia* (R.G. Coveny 15180). Gungulla Flat, SE of Waterfall, Royal National Park, 34°09'00"S 151°00'30"E alt. 150 m; dry sclerophyll forest dominated by *Eucalyptus sieberi*, *Angophora costata* and understorey of *P. pinifolia* (RGC 15180).

*Persoonia silvatica* (PHW 1761). 2.0 km S of Pikes Saddle, 36°00'10"S 149°34'00"E, alt. 1280 m; dry sclerophyll forest dominated by *Eucalyptus fraxinoides*, open understorey of *P. silvatica* with *Platysace lanceolata*, *Lomandra longifolia*, *Dianella*, *Stylidium graminifolium*, *Acacia dealbata*.

*P. subvelutina* (PHW 1764). Island Bend–Guthega Road, 1.5 km WSW of Island Bend rest area, 36°20'00"S 148°27'30"E, alt. 1280 m; dry sclerophyll forest dominated by *Eucalyptus pauciflora*; shrubby and grassy understorey with *P. subvelutina*, *Hakea microcarpa*, *Daviesia ulicifolia*, *Epacris* spp., *Leptospermum* spp. and *Arthropodium milleflorum*.

*P. virgata* (no voucher). Hastings Point, 28°22'S 153°35'E.