

## On the taxonomic identity of *Phanera jampuiensis* Darlong & D.Bhattach.

Subir Bandyopadhyay

Botanical Survey of India, Central National Herbarium, P.O. Botanic Garden, Howrah – 711103, West Bengal, India.  
[subirbandyopadhyay@yahoo.com](mailto:subirbandyopadhyay@yahoo.com)

### Abstract

*Phanera jampuiensis* Darlong & D.Bhattach. (Leguminosae: Caesalpinioideae: Cercideae) is here treated as a new synonym of *Phanera glabrifolia* Benth. var. *glabrifolia*. A collection from Tripura State, India, is the first collection of this variety from the wild after more than 160 years after *P. glabrifolia* was described in *Hortus Botanicus Calcuttensis*.

### Introduction

Attempts to identify an image of a flowering specimen of *Phanera* growing in the Jampui Hills of north eastern India (requested by Dr. Debjyoti Bhattacharyya, pers. comm., 2013) were unsuccessful. Later Darlong and Bhattacharyya (2014) described the collections to be the new species *P. jampuiensis* Darlong & D.Bhattach. from the ranges of Jampui Hills, North Tripura district, Tripura State, India. However, after examining the holotype of *P. jampuiensis*, the similarity of this species with the type specimens of *P. glabrifolia* Benth. var. *glabrifolia* (held at CAL) became apparent. The holotype of *P. jampuiensis* is morphologically only slightly different from the type specimens of *P. glabrifolia* var. *glabrifolia*, namely, there are slight differences in the shape of the leaves, length of the hypanthium, and in the number of staminodes /reduced stamens. These differences are here regarded as not taxonomically significant. The pollen grains of *P. glabrifolia* var. *glabrifolia* (from the type specimen – CAL11293), are of the Integrifolia type (sensu Larsen 1975) and is more or less similar to the photomicrograph of the pollen of *P. jampuiensis* given in the protologue (Darlong and Bhattacharyya 2014). Therefore, *P. jampuiensis* is best treated as a synonym of *P. glabrifolia*, as follows:

*Phanera glabrifolia* Benth. in Miq., *Plantae Junghuhnianae* 2: 263 (1852).

**Type:** (lectotype designated by Larsen and Larsen 1980): Cultivated at Hort. Bot. Calc. (labelled as '*Bauhinia piperifolia* Roxb. '), (lecto K760677 image!, isolecto CAL11293!, CAL11294!, CAL11295!, CAL11308!, isolecto P3100839–3100841, images!).

*Bauhinia glabrifolia* (Benth.) Baker in Hook.f., *Flora of British India* 2(5): 281 (1878), excl. Tenasserim collections.

*Phanera jampuiensis* Darlong & D.Bhattach., *Kew Bulletin* 69: 9534 (2014), *syn. nov.*

**Type:** India, Tripura, North district, Jampui hill range, Tlangsang, 23°53'26" N, 92°16'26" E, c. 770 m, 16 Apr 2013, L. Darlong 10397 (holo CAL25210!; iso ASSAM n.v.).

**Paratype:** Jampui hill, Sabual, 23°51'24" N, 92°15'74" E, c. 840 m, 2 Apr 2013, L. Darlong 10392 (ASSAM n.v., CAL n.v.). The isotype (ASSAM) and paratypes (ASSAM, CAL) have not yet been deposited by the authors.

**Note:** Larsen and Larsen (1980, p. 37) mentioned 'In 1852 Bentham described *Phanera glabrifolia* on a specimen sent out from the Botanical Garden in Calcutta under the name *Bauhinia piperifolia* Roxb. He correctly in the protologue draws attention to that the specimens in question does not match Roxburgh's description of *Bauhinia piperifolia* in *Flora Indica*, but does not suggest which species Roxburgh's description fit'. Larsen and Larsen (1980) concluded that *B. piperifolia* is undoubtedly a synonym of *Bauhinia scandens* L. [= *Phanera scandens* (L.) Raf.]. Larsen and Larsen (1980) also stated that the *P. glabrifolia* var. *glabrifolia* is known only from the type specimens sent out from Botanic Garden Calcutta and deposited at C, G, K, M and P; in each place several herbarium sheets are present.

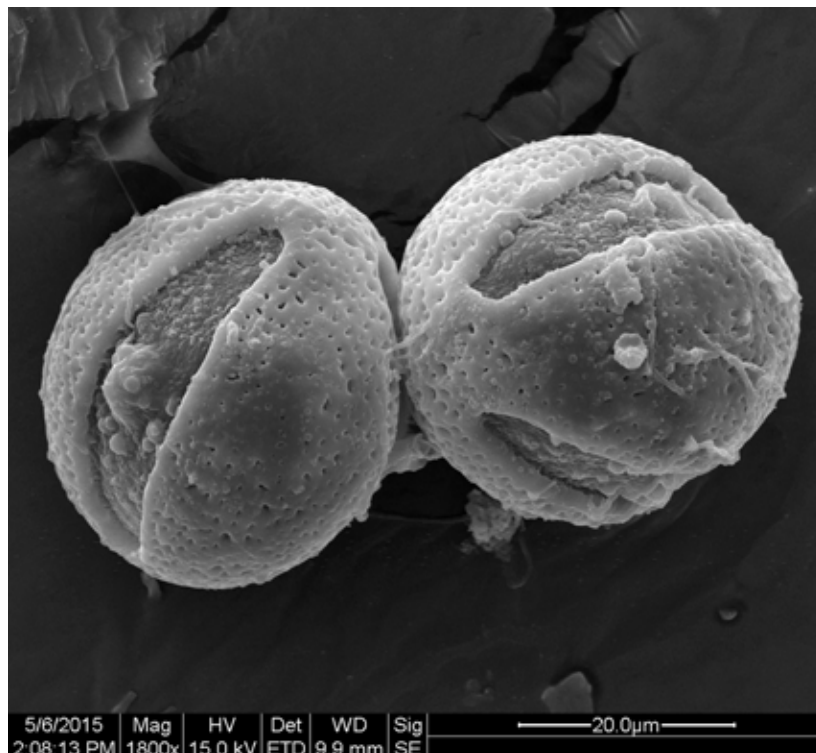
### Acknowledgments

I thank Dr. Paramjit Singh, Director, Botanical Survey of India and Dr. P. Lakshminarasimhan, Scientist 'E' and Head of the Office, Central National Herbarium, BSI for the use of their facilities. The herbaria of the Royal Botanic Gardens Kew (K) and the Botanical Survey of India (CAL) kindly gave permission to publish images of the type specimens of *Phanera glabrifolia* var. *glabrifolia* and *P. jampuiensis*. I also thank Barry Conn (NSW) for refining the manuscript.

### References

- Darlong L, Bhattacharyya D (2014) *Phanera jampuiensis* (Leguminosae: Caesalpinioideae: Cercideae), a new species from Tripura, India. *Kew Bulletin* 69: 9534–9539
- Larsen SS (1975) Pollen morphology of Thai species of *Bauhinia* (Caesalpinaceae). *Grana* 14: 114–131
- Larsen K, Larsen SS (1980) Notes on the genus *Bauhinia* in Thailand. *Thai Forest Bulletin. Botany* 13: 37–46

Manuscript received 19 June 2015, accepted 23 June 2015



**Fig 1.** Photomicrographs of pollen grains of *Phanera glabrifolia* Benth. var. *glabrifolia* (from the type specimen – CAL11293).



Fig 2. Photographs of the type of *Phanera glabrifolia* var. *glabrifolia* (K, top left specimen) [<http://specimens.kew.org/herbarium/K000214241>], and CAL, top right specimen) and type of *Phanera jampuiensis* (CAL, bottom left specimen).